



04/2025

CTC88W Georgian Cabin Assembly Instructions



Requirements:

- | | |
|---------------------------------|------------------------------|
| 2 People (recommended) | 2" (51mm) hole saw |
| Rubber Mallet | Jigsaw |
| Carpenter's Level | 1/4" (6mm) Nut Driver Bit |
| Tape Measure | Step Ladder |
| Cordless Drill | Adjustable Wrench |
| Phillips & Robertson Drill Bits | Grinder & Metal Cutting Disc |
| | Carpenter's Hammer |

It is highly recommended to view the assembly video prior to starting assembly!

[Click here to View the assembly process or scan the QR code.](#)



Manufactured by:

leisurecraft
— BUILDING LUXURY —

tel: 888-923-9813 | info@leisurecraft.com | web: www.leisurecraft.com

Georgian Cabin Assembly Instructions

Please read this entire manual before proceeding with the assembly.

Congratulations on the purchase of your Canadian Timber Georgian Cabin Sauna.

All electrical connections must be performed by a qualified licenced electrician!

For further information on your heater and installation instructions, please refer to the provided heater manual.

Always ensure that you have the correct screw length so that there will be enough thread to hold, and especially, so that the screw does not go all the way through the material and come out the other side.

When fastening screws into cedar where there are no predrilled holes, It is recommended to pre-drill a hole before inserting the screw to prevent the cedar from splitting or cracking.

Thank you for choosing Leisurecraft!

Manufactured by:



tel: 888-923-9813 | info@leisurecraft.com | web: www.leisurecraft.com

Georgian Cabin Assembly Instructions

Index

Base Preparation

Cabin Assembly

Roof Installation

Bench Installation

Electric Heater Installation (Option)

Wood Heater Installation (Chimney out the side wall) (Option)

Care & Maintenance

Warranty

Manufactured by:



tel: 888-923-9813 | info@leisurecraft.com | web: www.leisurecraft.com

Georgian Cabin Assembly Instructions

Sauna Base Preparation

Ensure the base for your sauna is level with a slight slope to the back for drainage.

A solid base for your sauna is recommended and can be made from the following.



Concrete Pad



Wood Deck



Crushed Stone



Patio Stone/Paver Blocks

It is recommended to build a base larger than required to provide a sitting area for cooling off during your sauna session.

Manufactured by:



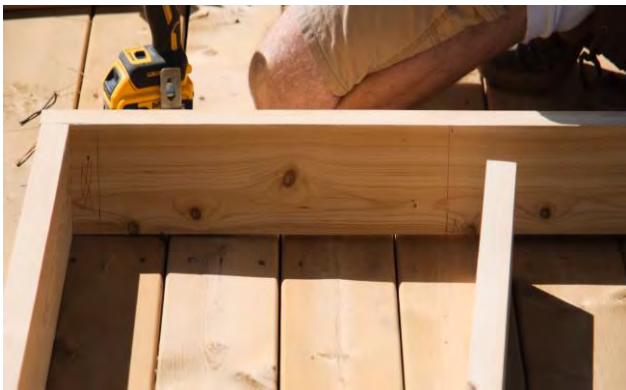
Georgian Cabin

Assembly Instructions

Cabin Assembly



Start the assembly of your Georgian Cabin by laying out the front and back base plates and the 8 – base supports.



The front and back pieces will be “marked” where each of the base supports will be placed.

2 Supports on each end and 4 centered across the base.



Insert 2 – 3” (76mm) screws into the end of each base stave.



Repeat this process for all 8 supports.

2 supports on either end and the remaining 4 centered on “marks”.

Manufactured by:



Georgian Cabin

Assembly Instructions

Cabin Assembly



To start the assembly of the floor, locate the stave that is labelled "Floor Starter"



Ensure the "floor Starter" stave is flush with the inside of the front and side base plates.



Secure with 2 - 3" (76mm) screws per support.

To give it a cleaner look, only secure the 2 outside supports on each side.



Align the next floor stave up to the edge of the first one and tap the tongue into the groove.

Once it is even with the first stave, secure it using 2- 3" (76mm) screws into the 2 outer supports on either side as in the previous step.

Manufactured by:



Georgian Cabin Assembly Instructions

Cabin Assembly



Repeat this process until all the floor staves have been placed.

The final 6 staves can be secured to every base support, as these will be hidden by the benches.



Use the floor stave marked "Floor Finisher" as the last floor stave.

This Floor Finisher stave should be even with the inside edge of the back joist.

If not, measure how much it is past the inside edge and cut the floor stave accordingly.



Place 3 -3" (76mm) screws into each of the side supports.



Locate the wall stave labelled "Door".

Manufactured by:



Georgian Cabin

Assembly Instructions

Cabin Assembly



Fasten the front and rear starter staves with 2 - 3" (76mm) screws to secure it to the floor.



Place one of the medium length wall staves at the front of the sauna and using the provided "hit block" tap it so the groove goes tight into the tongue of the front starter stave.

When using the tapping blocks, hit above the dado cuts to prevent ends from splitting.



Insert a 5" (127mm) screw into the notch to secure it to the starter stave below.

Repeat for the other side of the front wall.



Now place a full-length stave at the rear of the sauna and tap the tongue and groove together to make sure it is tight and secure with a 5" (127mm) screw into the notch at either end.

Manufactured by:



Georgian Cabin

Assembly Instructions

Cabin Assembly



Repeat the process for 2 more of the side wall staves



Continue with the front wall by placing one of the medium length wall staves on both ends and tapping them so the groove goes tight into the tongue of the front starter stave and secure it with a 5" (127mm) screw into the notch.



Continue this process using a full-length stave at the rear of the sauna and tap the tongue and groove together to make sure it is tight and secure with a 5" (127mm) screw into the notch at either end.

Repeat the above steps until you are ready for the 4th front wall stave.



Install the medium length stave labelled "window" on either side of the front wall and secure in the same manner as previous steps.

These staves will have a notch cut out for the window.

Add another back wall stave and then a side wall stave on either side.

Manufactured by:



Georgian Cabin

Assembly Instructions

Cabin Assembly



Place a short front wall stave on either side of the front wall and secure with a 5" (127mm) screw in each of the notches.



Repeat the process of placing and securing the sides, back wall staves and short front wall staves until the short staves are 8 staves high.



Place your windows onto the front wall and ensure the staves are fully inserted into the grooves.



Slide the door in between the front wall staves.

Manufactured by:



Georgian Cabin

Assembly Instructions

Cabin Assembly



Slide all the small front wall staves between the door and windows and ensure they are tight to each other by tapping with a mallet.



Place a medium length front wall stave above each window and secure using a 5" (127mm) screw into each notch.



Insert a rear wall stave and a side stave on either side of the sauna and secure using 5" (127mm) screws into the notches on each end of the staves.



Secure the other full length front wall stave labelled "Door" above the windows and door and secure with 5" (127mm) screws into the notches in the same manner as the previous steps.

Manufactured by:



Georgian Cabin

Assembly Instructions

Cabin Assembly



Insert 2 – 3" (64mm) screws into the top of the door frame as shown.

Repeat this for the side opposite the door hinges as well with 3 – 3" (64mm) screws.



Place a 3" (64mm) screw through the middle hole on the 2 hinges and then centered in the frame between the 2 hinges.



Place the side wall stave with the tapered edge on the side wall and secure in the notches with a 5" (127mm) screw on both sides of the sauna.

The longer edge of the taper on the side wall stave goes to the inside of the sauna.



Place the front and rear triangle front pieces onto the sauna.

Use a rubber mallet to tap the piece tight to the wall.

Secure with 5" (127mm) screws into the pre-drilled holes.

Manufactured by:



Georgian Cabin

Assembly Instructions

Cabin Assembly



Use a 5" (127mm) screw in between the previously placed screws in the top of the door frame to pull in the middle of the triangle piece.



Locate the center roof support beam.



Place the center roof support beam into the slots on the top of the triangle pieces.



Secure each end with a 5" (127mm) screw on each side of each triangle piece.

Manufactured by:



Georgian Cabin

Assembly Instructions

Roof Assembly



Find the 2 roof starter pieces.

This is 2 boards wide with a notch cut out.



Align the notch with the edge of the triangle pieces and use 2 - 3" (64mm) screws on each end and 5 - 3" screws from the roof board into the side wall.



Start placing the roof staves going up the roof and tap into each other, secure with 2 - 3" (64mm) screws into each end.



When you reach the top of one side, use the wide stave without the groove on the top.

Secure the top peak piece with 2 - 3" (64mm) screws at either end and 4 more screws centered along the peak into the roof support beam.

Repeat the process on the other side of the roof.

Manufactured by:



Georgian Cabin Assembly Instructions

Roof Assembly



Pre-place 4 – 3" (64mm) screws into the front trim pieces and secure to the roof staves.

The trim should be fastened so the top of the trim is flush to the top of the roof staves.

Repeat on the back side of the sauna.



Secure the front metal trim pieces onto the wood trim pieces and secure on the face and underneath with the included short black screws.

Repeat on the back side of the sauna.



Fold over the ends of the metal trim pieces and secure with the included black short screws.



Place the long metal trim pieces on the sides of the roof and secure with the included short black screws.

Manufactured by:



Georgian Cabin Assembly Instructions

Roof Assembly



Start applying the metal shingles by sliding the shingle under the side metal trim piece and flush with the edge of the side trim and then secure using the included roofing screws.

Screw the shingle to the roof at the bottom of each ridge.



Overlap the panels one ridge and continue securing to the roof to the other side of the sauna.



Continue adding the shingles up the roof overlapping the previous row securing with roofing screws on every ridge until you get to the last row needed.



The last row of roof shingles will be precut to size.

Manufactured by:



Georgian Cabin

Assembly Instructions

Roof Assembly



Place and secure the last 3 shingles.

Repeat the process on the other side of the roof.



Reveal the adhesive side of the M-seal and apply it to the inside edges of the roof ridge cap.



Place the roof ridge cap under the front and back trim pieces.

Secure the ridge cap on both sides with roofing screws in every ridge.



Place a small black screw into the front and back trim piece.

Flatten any points on the trim with a hammer.

Manufactured by:



Georgian Cabin

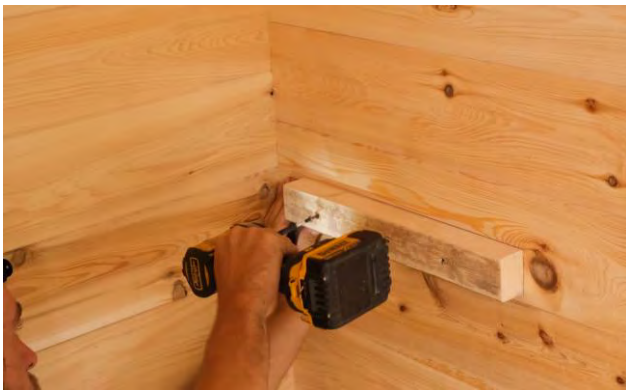
Assembly Instructions

Bench Assembly



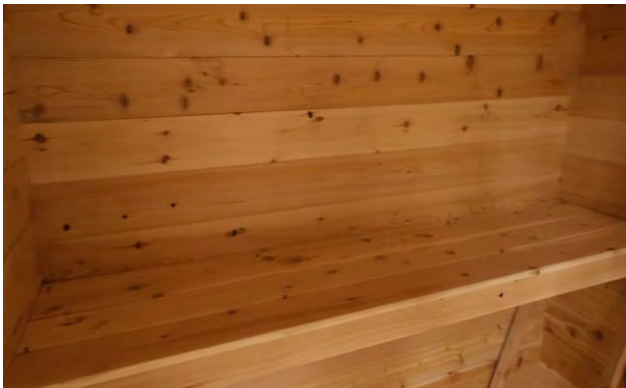
Start the assembly of your benches by placing the 2-tier bench support along the wall.

Using a pencil, trace the top and front of the upper and lower bench.



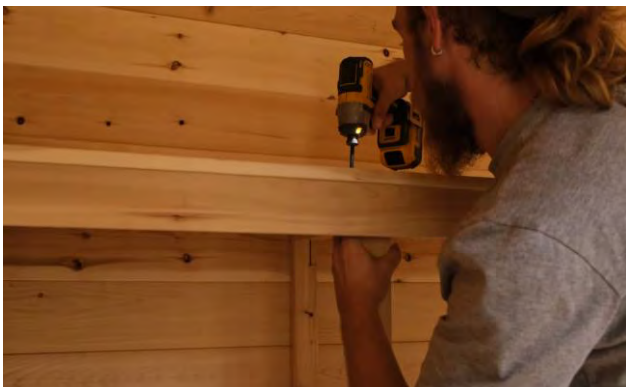
Mount one of the wall mount bench brackets flush to the line on the upper bench and secure with 3 – 2 ½" (64mm) screws.

Repeat process on opposite side of sauna,



Place the top bench onto the supports and secure with 2 ½" (64mm) screws into the wall mount bench brackets.

Place the screws between the bench slats to make them less visible.



Align the bench supports to the slats on bottom of bench.

Ensure bench support is square and secure with 2 ½" (64mm) screws from the bench into the support.

Again, place the screws into between the bench slats to make them less visible.

Manufactured by:



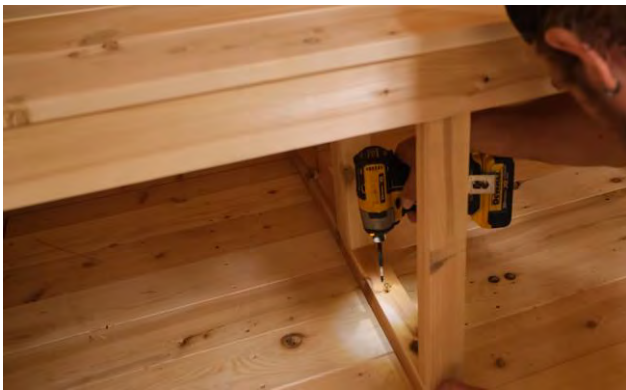
Georgian Cabin

Assembly Instructions

Bench Assembly



Repeat the process for the bottom bench.



Screw the bench supports to the floor and back wall using 2 ½" (64mm) screws.



Place the small bench support against the wall and mark the top and the front as in previous steps.



Mount the remaining wall mount bench bracket flush to the line of the bench and secure with 3 - 2 ½" (64mm) screws.

Manufactured by:



Georgian Cabin

Assembly Instructions

Bench Assembly



Place the small bench support on the other end, make sure the side labelled “top” is upward.



Screw the bench support to the benches and side wall using 2 ½” (64mm) screws.



Place the bench on the supports and secure with 2 ½” (64mm) screws.

Again, place the screws into between the bench slats to make them less visible.



Line up the supports and secure the bench to the supports and the supports to the floor and side wall in the same manner as previous steps using 2 ½” (64mm) screws.

Manufactured by:



Georgian Cabin

Assembly Instructions

Door Handles & Accessories Installation



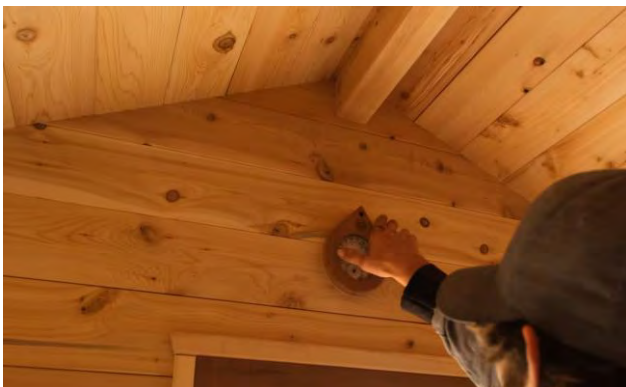
Install the outer door handle (small) at the desired height using 2 - 2 ½" (64mm) screws in the pre-drilled holes.



Install the inner door handle (large) horizontally at the desired height. Ensure the handle is level and secure using 2 - 2 ½" (64mm) screws in the pre-drilled holes.



Install the optional shelf at the desired location and secure with 2 - 1 ½" (38mm) screws.



Install the optional Thermometer using a 1 ½" (38mm) screws.

Manufactured by:



Georgian Cabin

Assembly Instructions

Electric Heater Installation (Optional)



Measure the width of the stove mounting holes.



Measure the height of the mounting holes and add 6".
(152mm)



Transfer the measurements to the back wall of sauna.

Ensure the heater will be centered between the benches.



Install the two $\frac{1}{4}$ " x $1\frac{1}{2}$ " (6mm x 38mm) hex head lag screws (supplied with the heater) into the holes.

Manufactured by:



Georgian Cabin

Assembly Instructions

Electric Heater Installation (Optional)



Hang the heater on the 2 screws and tighten to secure stove in position.



Locate the pieces for your heater guard.

Stand the 2 Assembled side pieces of the heater guard on edge with pre-drilled holes on the bottom.



Screw heater guard support to either side using (2) – 1 ½" (38mm) screws per side.

Repeat for the bottom heater guard support.



Place 2- 2 ½" (64mm) screws into the pre-drilled holes on either side of heater guard to prepare for mounting.

Manufactured by:



Georgian Cabin

Assembly Instructions

Electric Heater Installation (Optional)



Center the guard around the heater and secure to wall with the pre placed screws.



Ensure the guard is level and secure the other side.



Wash the layer of rock dust off of the sauna rocks before using them.

When your sauna is set up and working you should “break-in” the sauna before using it for the first time by turning on the heater to its highest setting and operate it for about 1 hour.

This is recommended to burn off any oils impurities from manufacturing, and it also “cures” the woodwork.

- ***All wiring should be installed according to the heater manufacturers instructions and by a licensed electrician.***

- **Do NOT use a G.F.I breaker**

Georgian Cabin Assembly Instructions

Wood Stove Installation (Chimney out the back wall) (Optional)



Remove all protective film from stainless steel parts and the plastic wrap from stove pipe pieces before installation.



Fasten the stove handle onto the stove door With the screws provided.



Remove the screw on the back of stove and remove the back flap.



Place the heat shield on the floor where the stove will be.

Manufactured by:

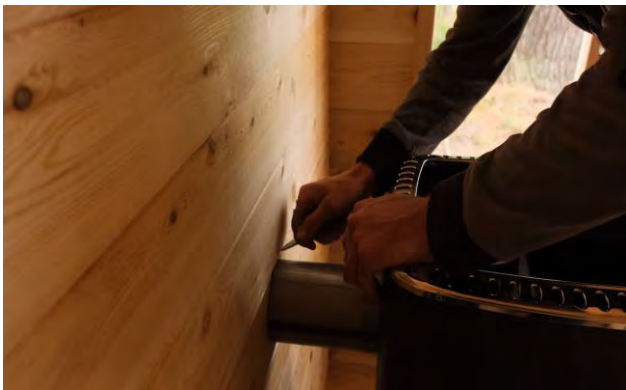


Georgian Cabin Assembly Instructions

Wood Stove Installation (Chimney out the back wall) (Optional)



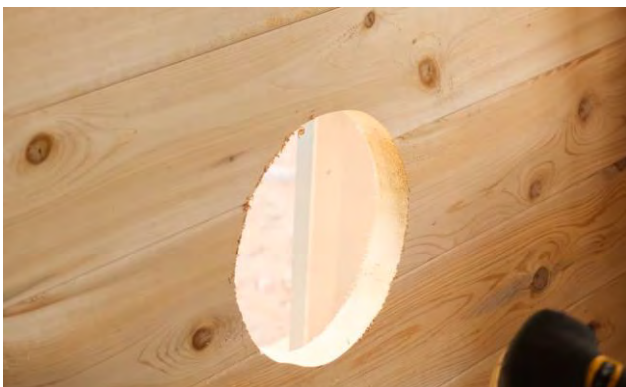
Place the stove onto the heat shield.



Place the short metal pipe into the back of the stove and mark it where it meets the wall.



From the mark, make an 8" (203mm) circle.



Cut out the circle with a jigsaw.

Manufactured by:



Georgian Cabin

Assembly Instructions

Wood Stove Installation (Chimney out the back wall) (Optional)



Place the chimney through the hole, then through the heat shield (hole towards the bottom), then into the stove.



Secure the heat shield to the wall with 6 - 1" (25mm) screws.



Measure the distance from the wall to the center of the chimney.



Mark this distance near the top of the sauna wall.

Manufactured by:



Georgian Cabin Assembly Instructions

Wood Stove Installation (Chimney out the back wall) (Optional)



Place 3 – 3" (76mm) screws into each of the 3 chimney support boards.

Mark the center of the board to line up with the mark in the last step.



Secure the support to the wall lining up the center to the mark placed on the wall.

Add the second and 3rd support pieces on top of the first one, with the screws in opposite orientation to avoid hitting each other.



Mark the center of the 3rd support piece and install the chimney support bracket centered on this mark with the included lag screws.



Assemble the remaining chimney pieces.

Manufactured by:



Georgian Cabin Assembly Instructions

Wood Stove Installation (Chimney out the back wall) (Optional)



Attach the support strap around the 2 chimney pipes and tighten up.



Attached assemble chimney pieces to the "T" coming out the back of the sauna and secure with a support band.



Push the chimney in until it aligns with the top support bracket and secure it with a support band and the included bolt and washers.



Install the cap on the top of the assembled chimney.

Manufactured by:



Georgian Cabin Assembly Instructions

Wood Stove Installation (Chimney out the back wall) (Optional)



Install the bottom half of the exterior chimney shield with the provided screws.

Ensure that it is level.



Overlap the top half of the exterior chimney shield and secure with provided screws.



Mark the vent outlet hole position high up on the back wall.

Drill out with a 2" (51mm) hole saw.

Only go halfway through to prevent splintering and drill the remainder from the other side of wall.



Use a 1 ½" (38mm) screw and attach the vent board on the inside of the sauna making sure it is tight but can still be turned.

Manufactured by:

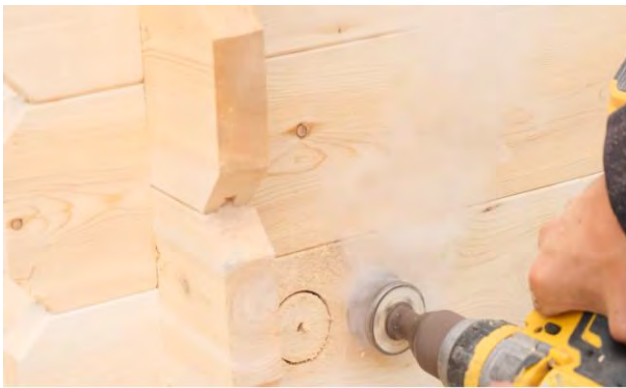


Georgian Cabin Assembly Instructions

Wood Stove Installation (Chimney out the back wall) (Optional)



Using 1 ½" (38mm) screws, screw on the vent cover.



Mark the vent inlet hole positions on the side wall of the sauna, next to the stove, and drill out with a 2" (51mm) hole saw.

Only go halfway through to prevent splintering and drill the remainder from the other side of wall.



Using 1 ½" (38mm) screws, screw on the vent cover.

(note that the vent guard only goes on the outside.)



Care & Maintenance

Regular sauna maintenance is an important aspect of owning a sauna and is essential for preserving the longevity of the sauna and ensuring a pleasant and relaxing experience.

Maintaining your sauna in pristine condition, not only maximizes the performance of the sauna but also safeguards your investment, allowing for enjoyable and healthful sauna sessions for years to come.

Interior

It is recommended to vacuum or sweep out the inside of your sauna frequently to remove dirt and other debris.

After every few uses, a slight wash of the floor and benches with warm soapy water will maintain its cleanliness.

Use a sheet of fine grit sandpaper or a low-pressure wash to remove more stubborn stains or for a deeper cleaning of the interior of your sauna.

After each use, leave the vents and door open to ensure the sauna completely dries between uses.

To help reduce the amount of dirt and sweat in the sauna, users should use towels on benches while using the sauna to help reduce stains that will require additional cleaning.

Heater

Ensure heater is completely cooled before cleaning.

Use a cloth to remove dust from the heater's exterior.

Sauna stones may split or crack due to the exposure of various temperature changes.

Inspect stones for any cracks or breakage and replace as needed to maintain effective heating.

Refer to the manufacturer's heater manual for additional maintenance recommendations.

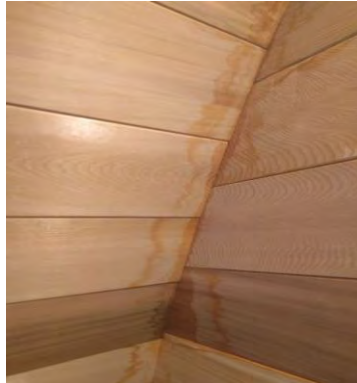
Exterior

Depending on the humidity and weather conditions in your area, the cedar will either shrink or expand based on the amount of moisture absorption. The desired effect is to have the cedar expand into the bands therefore making the sauna staves much tighter. It is recommended to tighten the bands after the initial installation, usually within the first month and then ongoing as required.

Over time the cedar will weather into a weathered grey colour from natural elements including the sun, rain and snow. This natural weathering will not harm the wood or impair the sauna's performance.

If you wish to retain the natural color of your Leisurecraft Sauna, ensure to use a UV inhibiting sealant.

Some minor water seeping into the sauna is expected and normal for an outdoor sauna. If your sauna is properly installed, you should not have water dripping in, but you should expect some water seepage, especially on the top and sides of the sauna. To minimize water seepage, select a location for your sauna that is under cover, or choose from one of our roofing options.



Your satisfaction is our priority, and we are committed to ensuring you have the best possible experience with our products. In the event of any ongoing issues, we kindly advise reaching out to the retailer from whom the sauna was purchased or contacting Leisurecraft directly for assistance.



support@leisurecraft.com



888-923-9813



5 Year Residential Limited Warranty Policy

All products designed and manufactured by Dundalk LeisureCraft Inc. ("LeisureCraft") are covered by a limited warranty against defects in materials and workmanship under normal residential use for a period of five (5) years, beginning on the date the product is received by the original end-user consumer.

This warranty does not apply to defects resulting from normal wear and tear, improper installation, insufficient or improper maintenance, natural weather conditions or failure to follow the manufacturer's installation, usage, or care instructions.

In the event of a valid warranty claim, LeisureCraft will provide replacement parts at no charge. However, please note that the replacement of parts will not extend the original warranty period.

This warranty is limited solely to the replacement of parts and does not cover any associated service, labor, or installation costs, all of which are expressly excluded.

For products offered by LeisureCraft that are not manufactured by LeisureCraft, please refer to the warranty policy and terms provided by the manufacturer.

Limited Warranty

Dundalk LeisureCraft Inc. ("LeisureCraft") is committed to providing high-quality sauna heaters and accessories to our customers. To offer peace of mind, we will match the manufacturer's warranty on all eligible products purchased from us. If the manufacturer offers a warranty on the product, we will honor that warranty, ensuring the same terms, coverage, and duration.

This warranty is limited to the replacement of parts only. It does not cover any service, labor, or installation costs, which are expressly excluded.

This warranty does not apply to defects caused by normal wear and tear, improper installation, inadequate or improper maintenance, or failure to adhere to the manufacturer's installation, use, or care instructions.

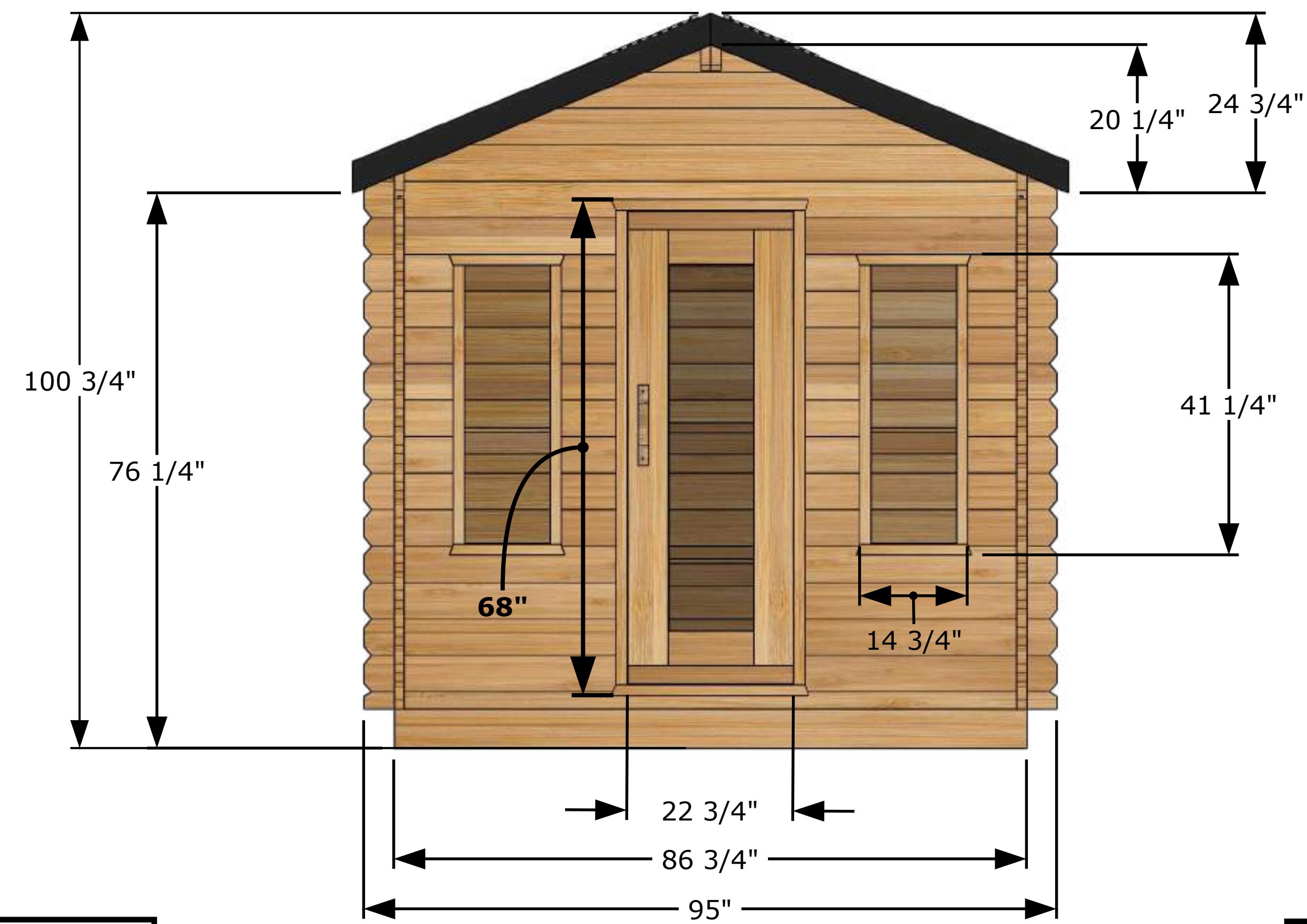
All electrical connections must be made by a licensed electrician. Failure to comply with this requirement will void the warranty.

For warranty claims or inquiries, please contact LeisureCraft customer support at: Phone: 888-923-

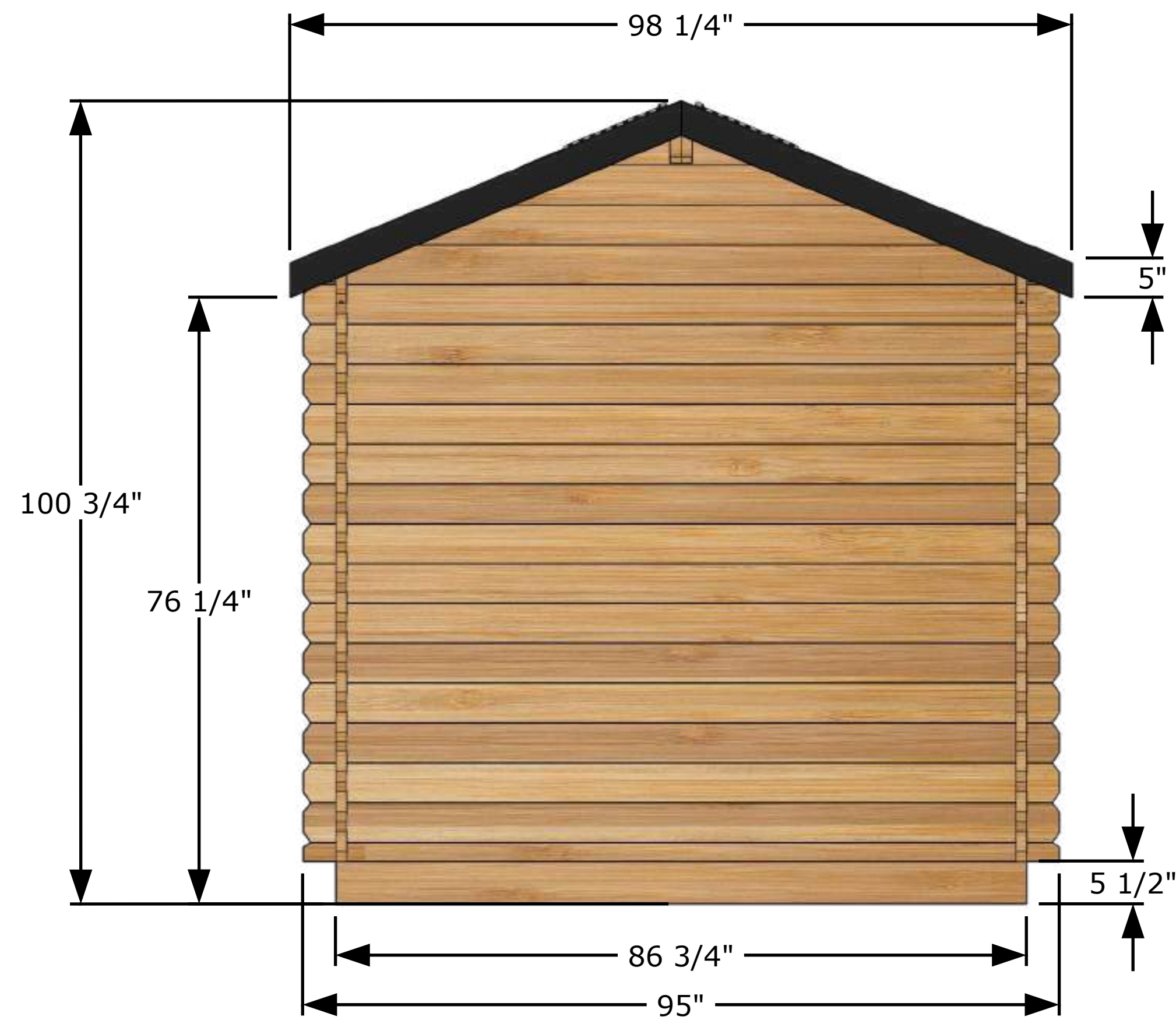
9813 Email: support@leisurecraft.com



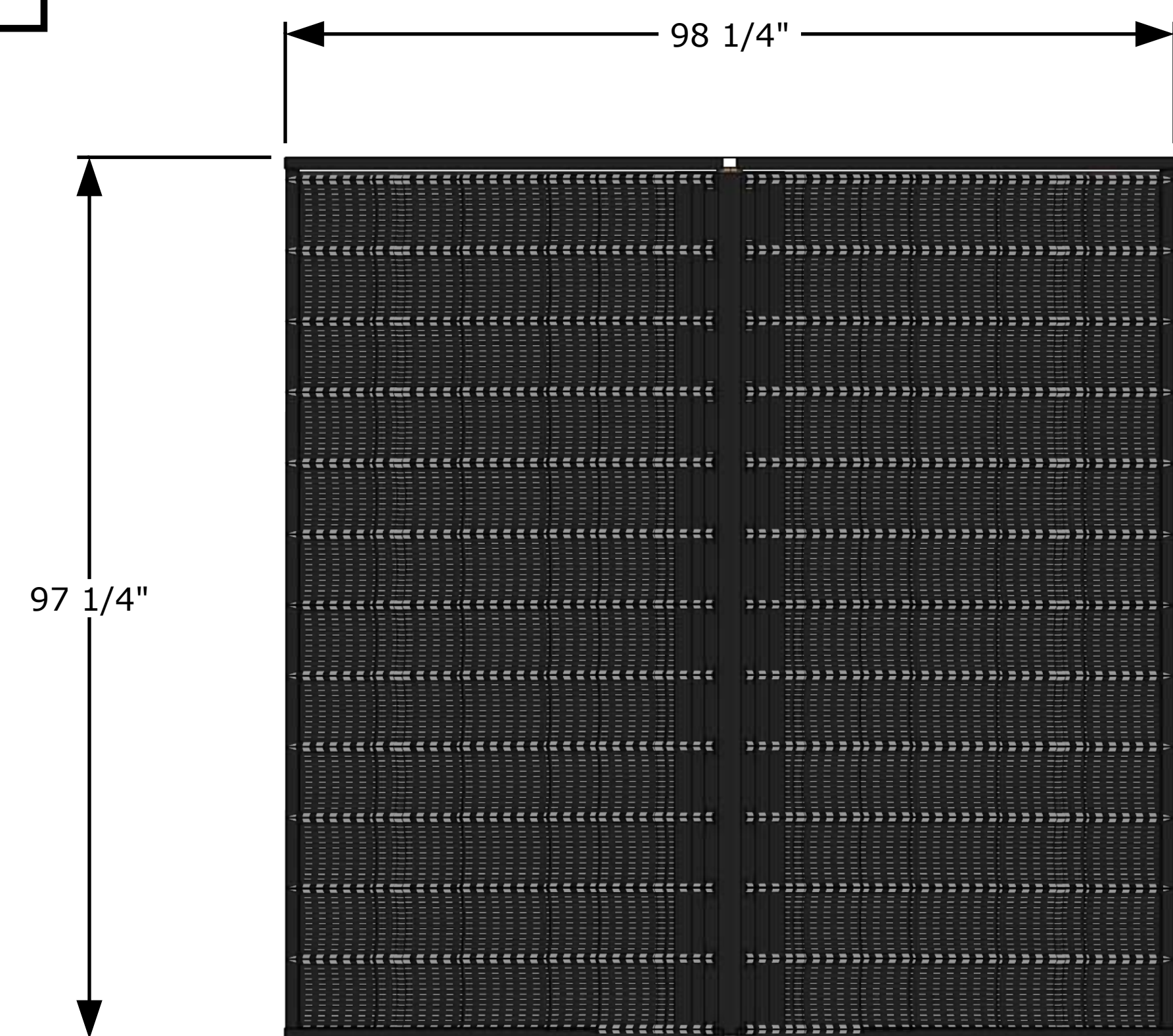
Front View



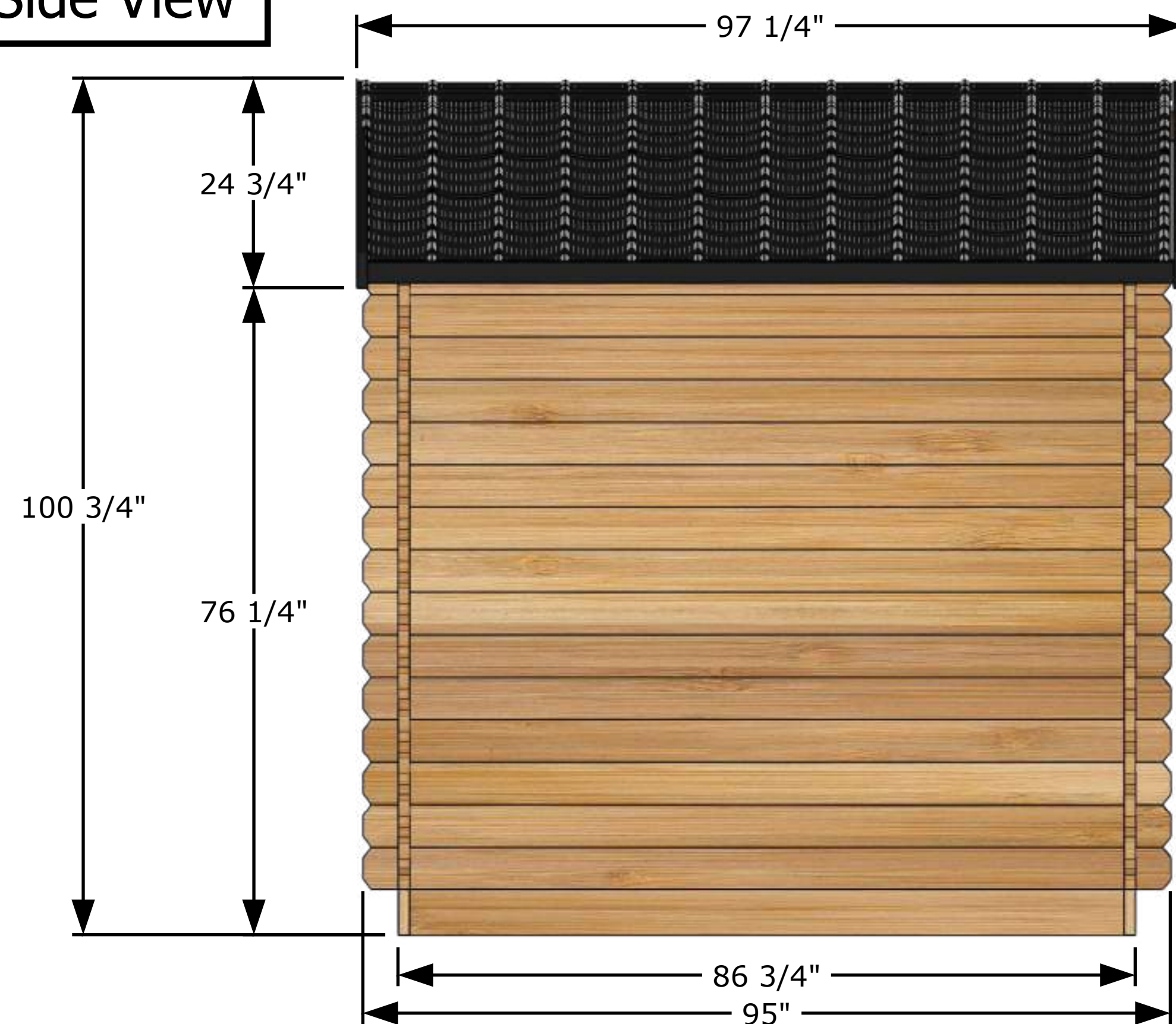
Back View



Top View



Side View



GEORGIAN CTC88W Sauna Model
All dimensions in Imperial (Inches)

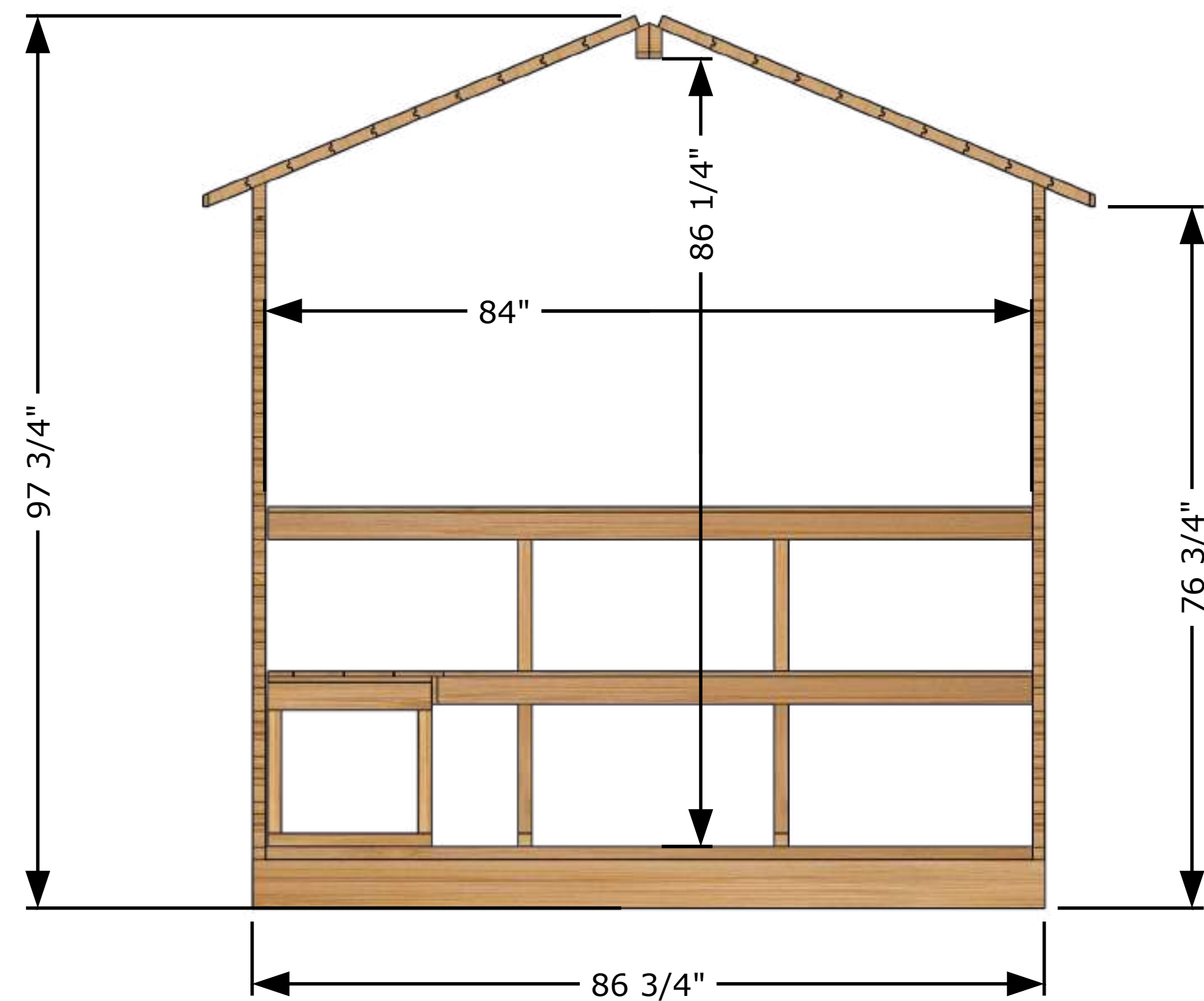
External Structure Dimensions (Drawing 1 of 3)

April 9, 2025 Tim Marshall

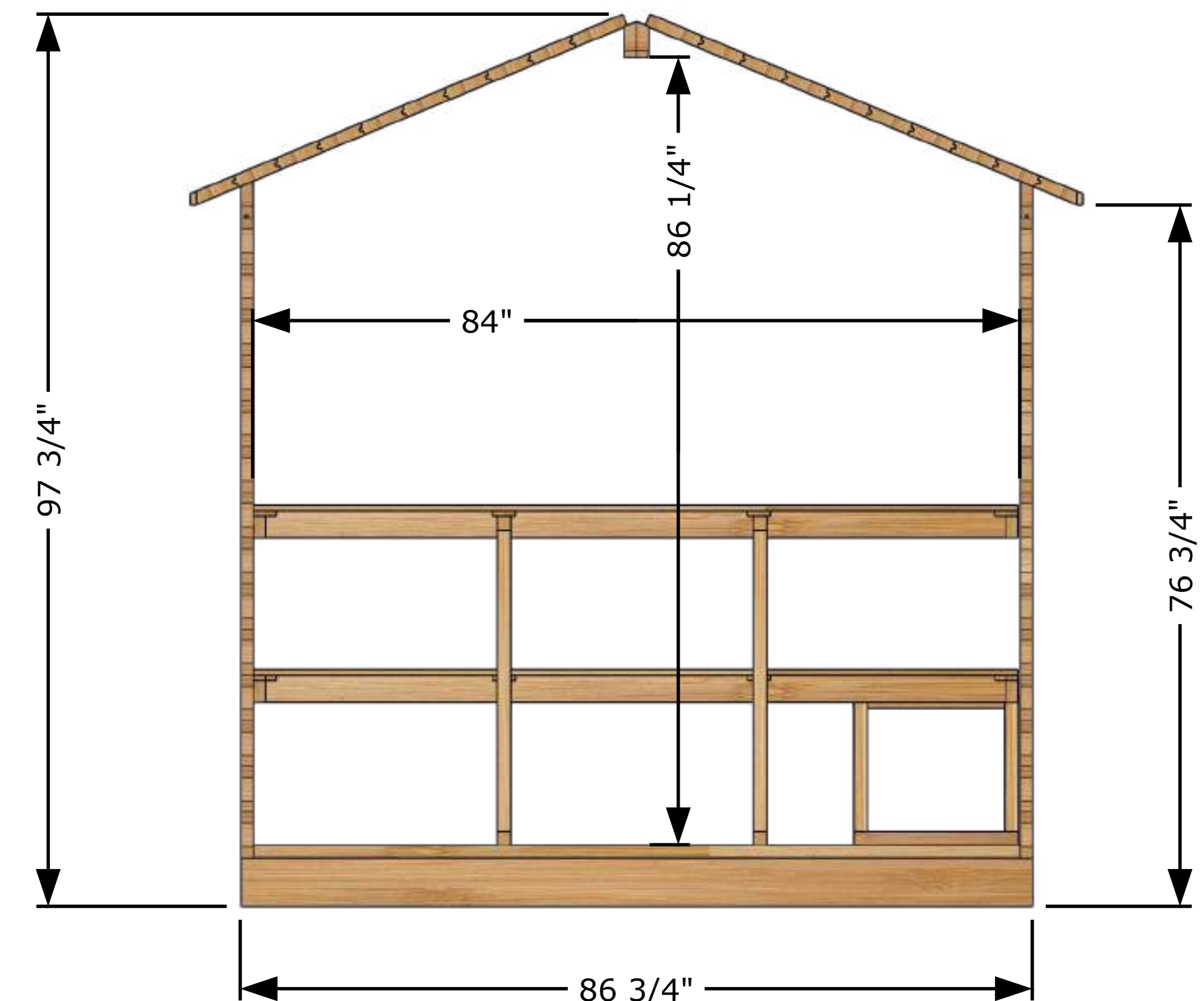


318448 Line NE,
Melancthon, ON
L9V 2K3
(519)923-9813

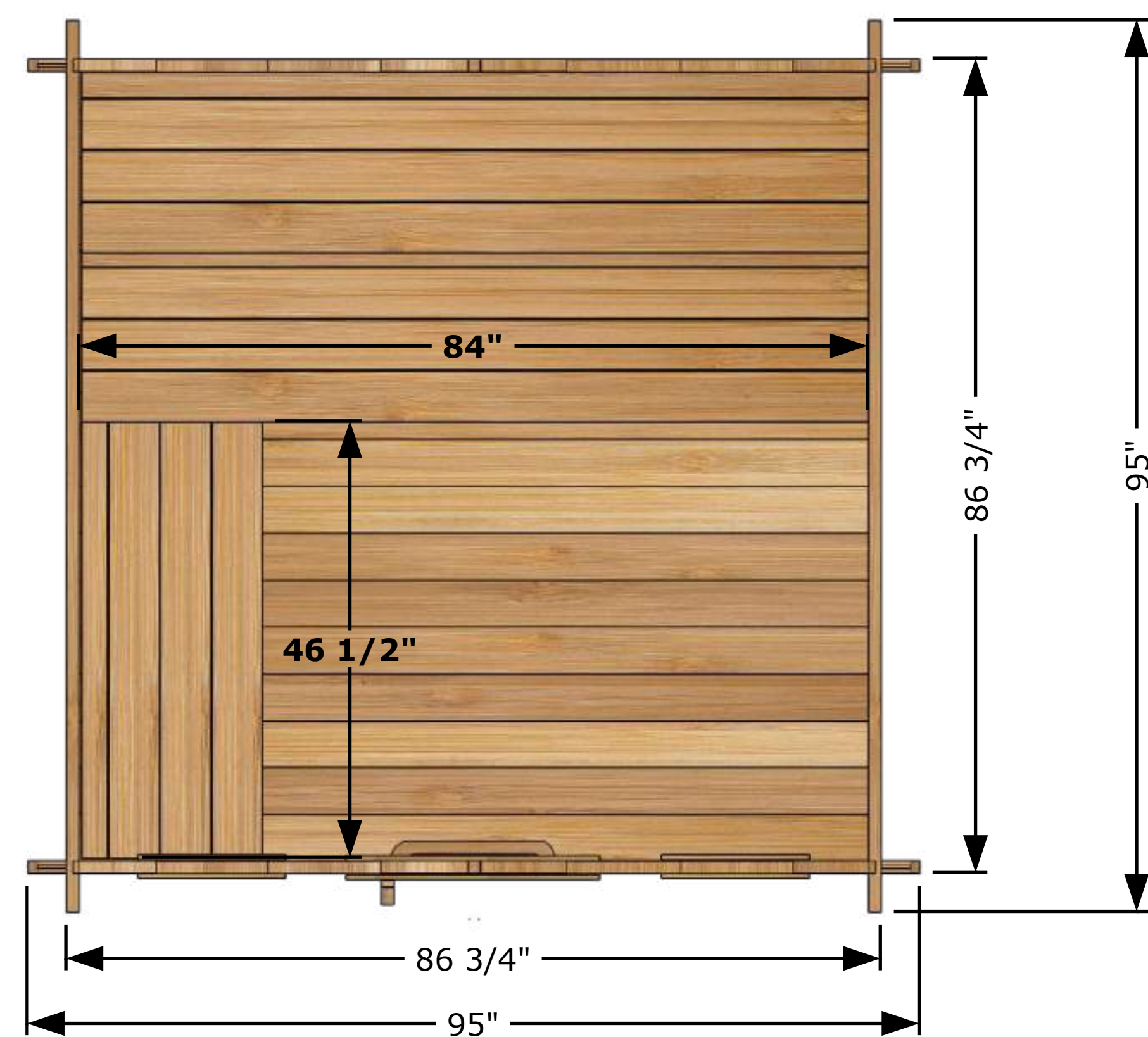
Front View



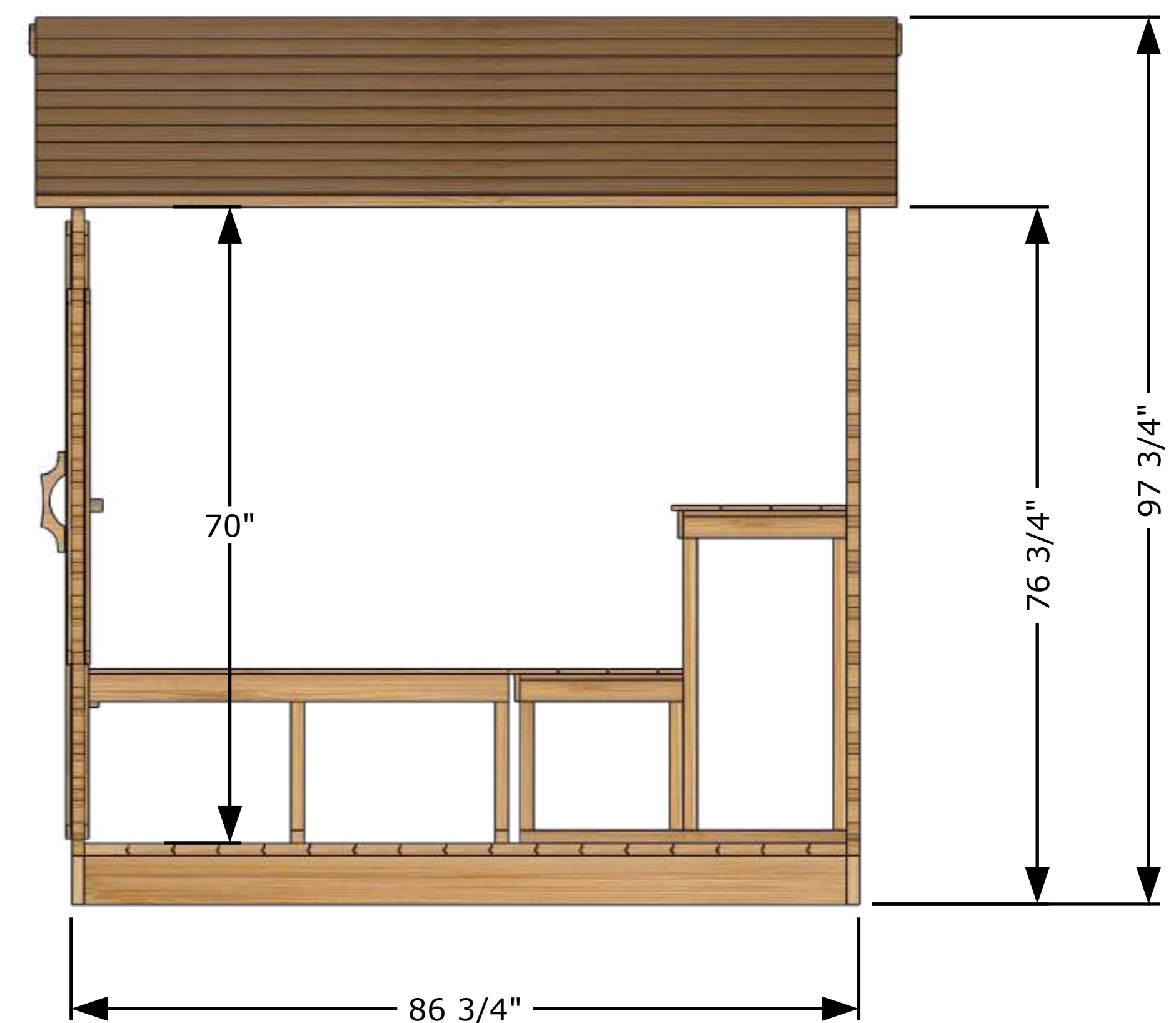
Back View



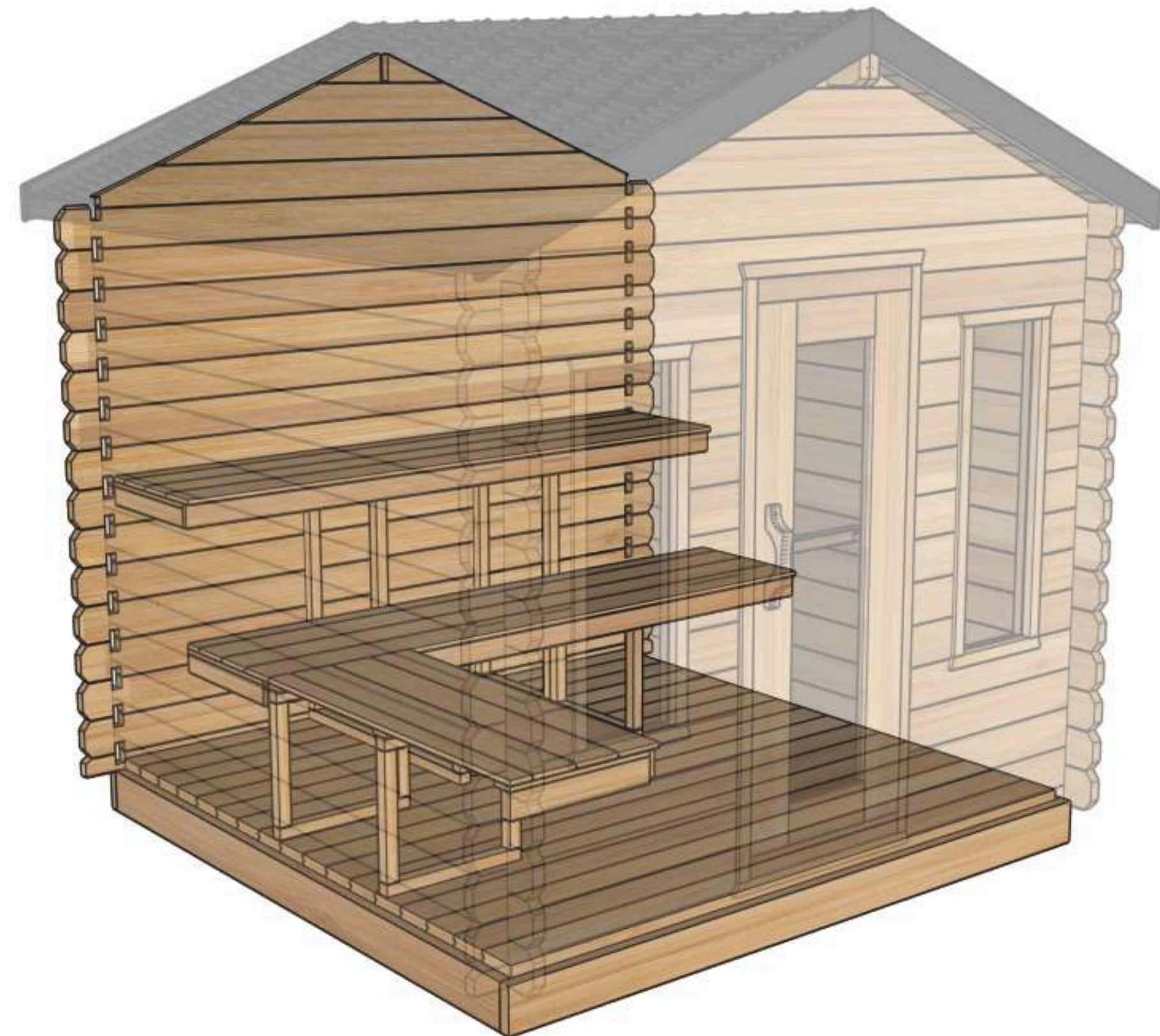
Top View



Side View

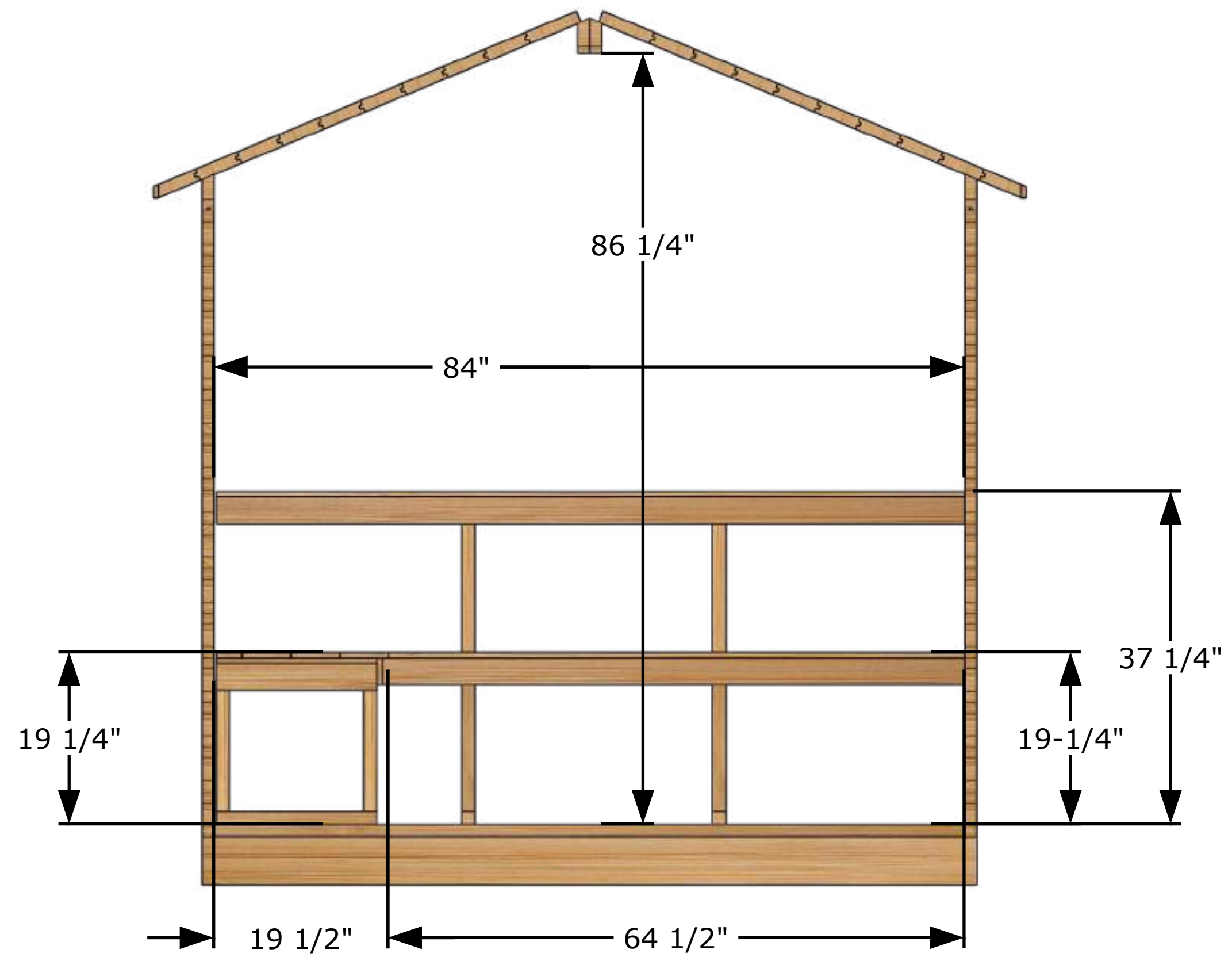


Perspective View



Main Structures and Base Material	Constructed with SPF Eastern White Cedar (softwood structural lumber).
Interior and Ceiling Details	Walls and ceiling T&G Boards Eastern White Cedar wood.
Interior Material	Benches made of Eastern White Cedar wood.
Sauna Door and Windows	Door glass is 5 mm thick tempered glass.
	Window is 5 mm bronze tempered glass.
Door Handle	Door handle made of solid wood, keeping the door closed with a magnet.

Front View



Side View

