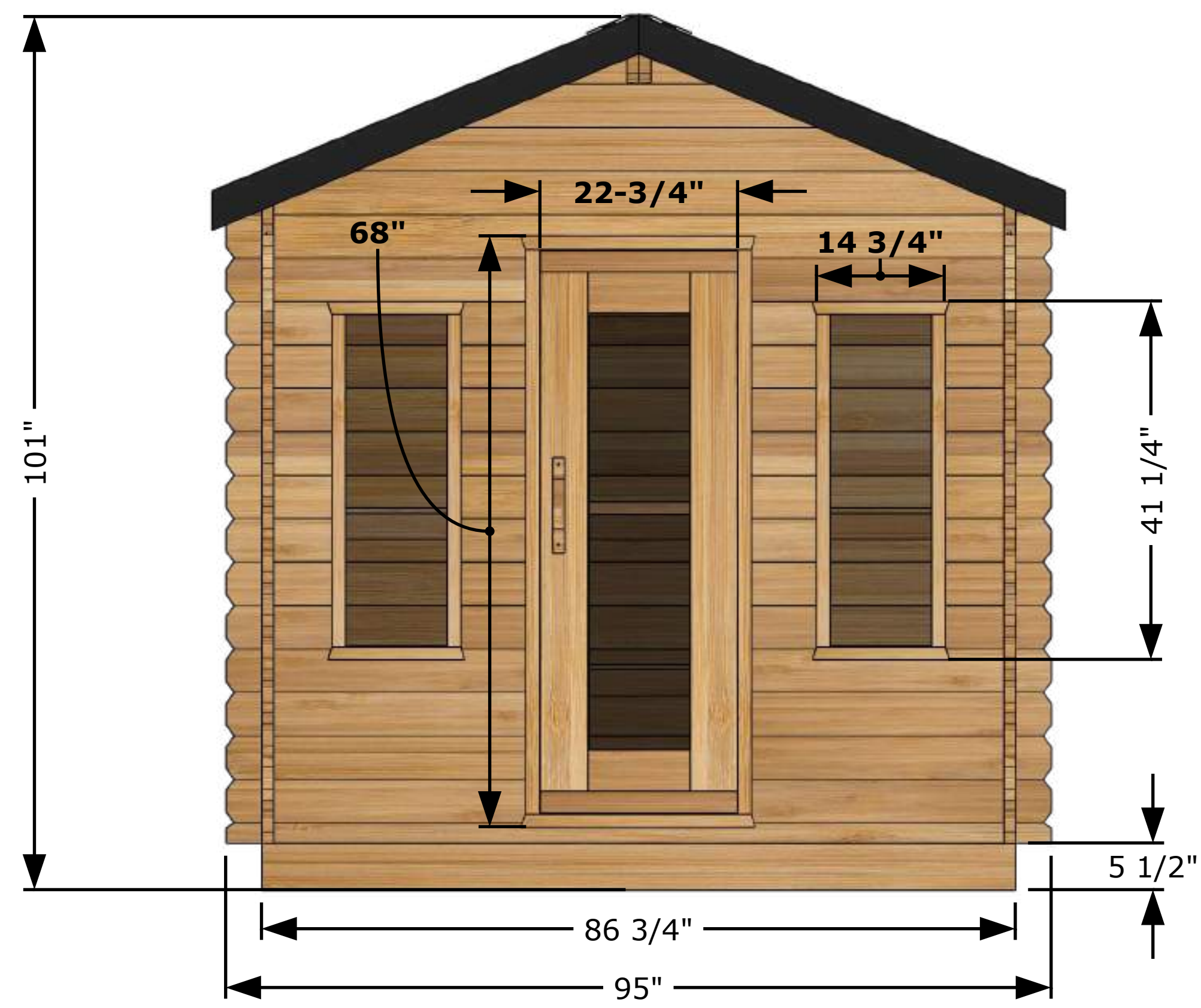
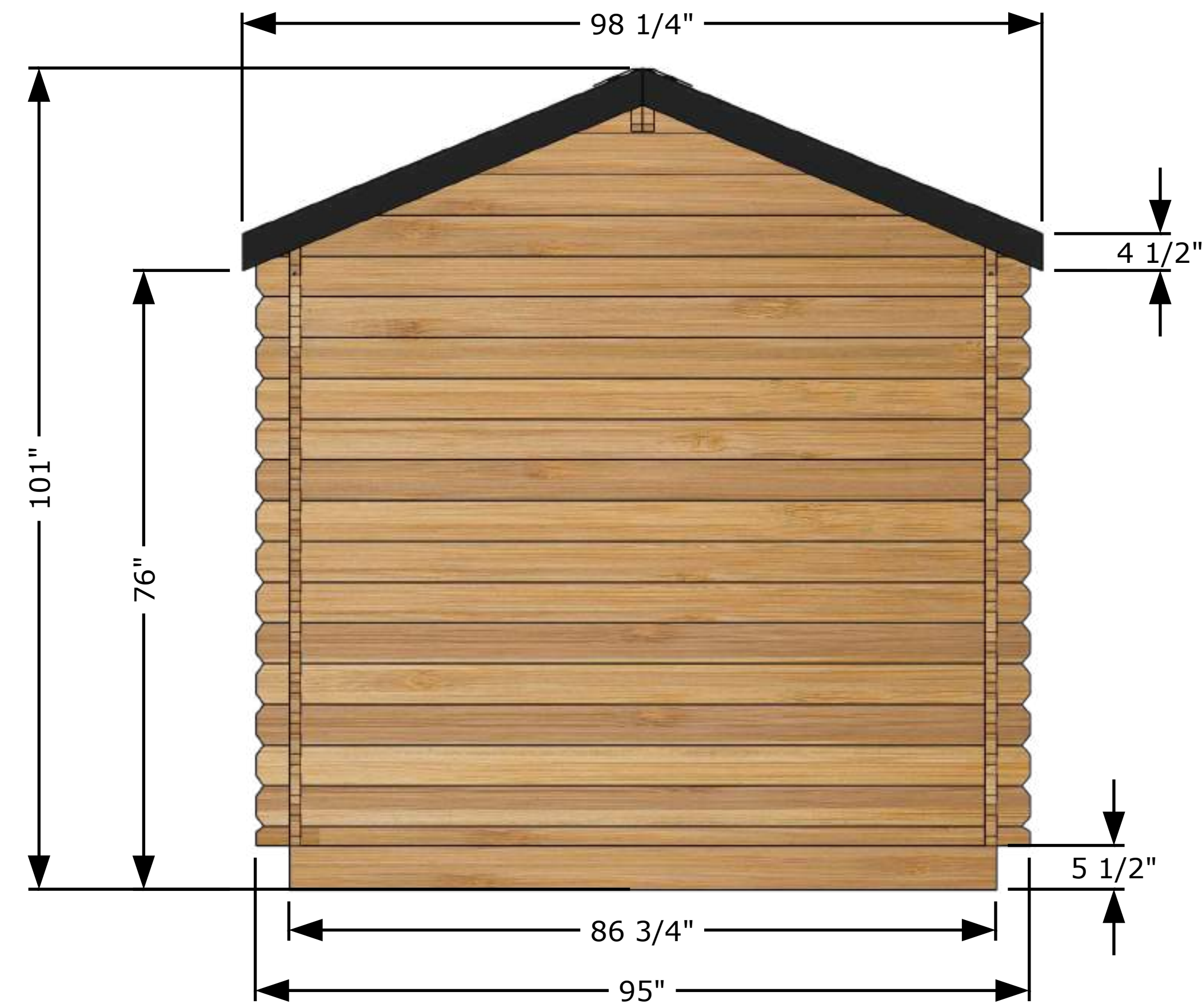


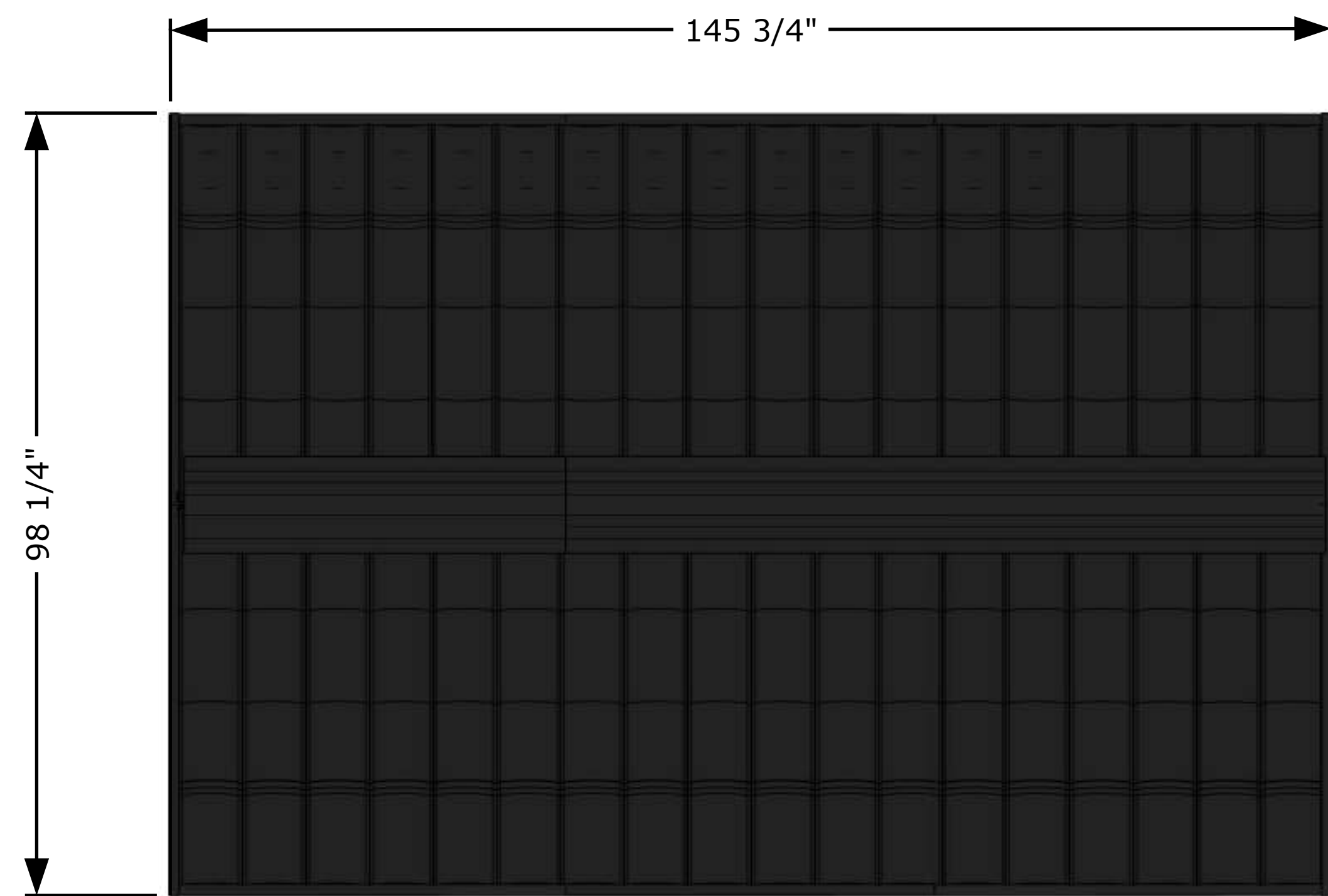
Front View



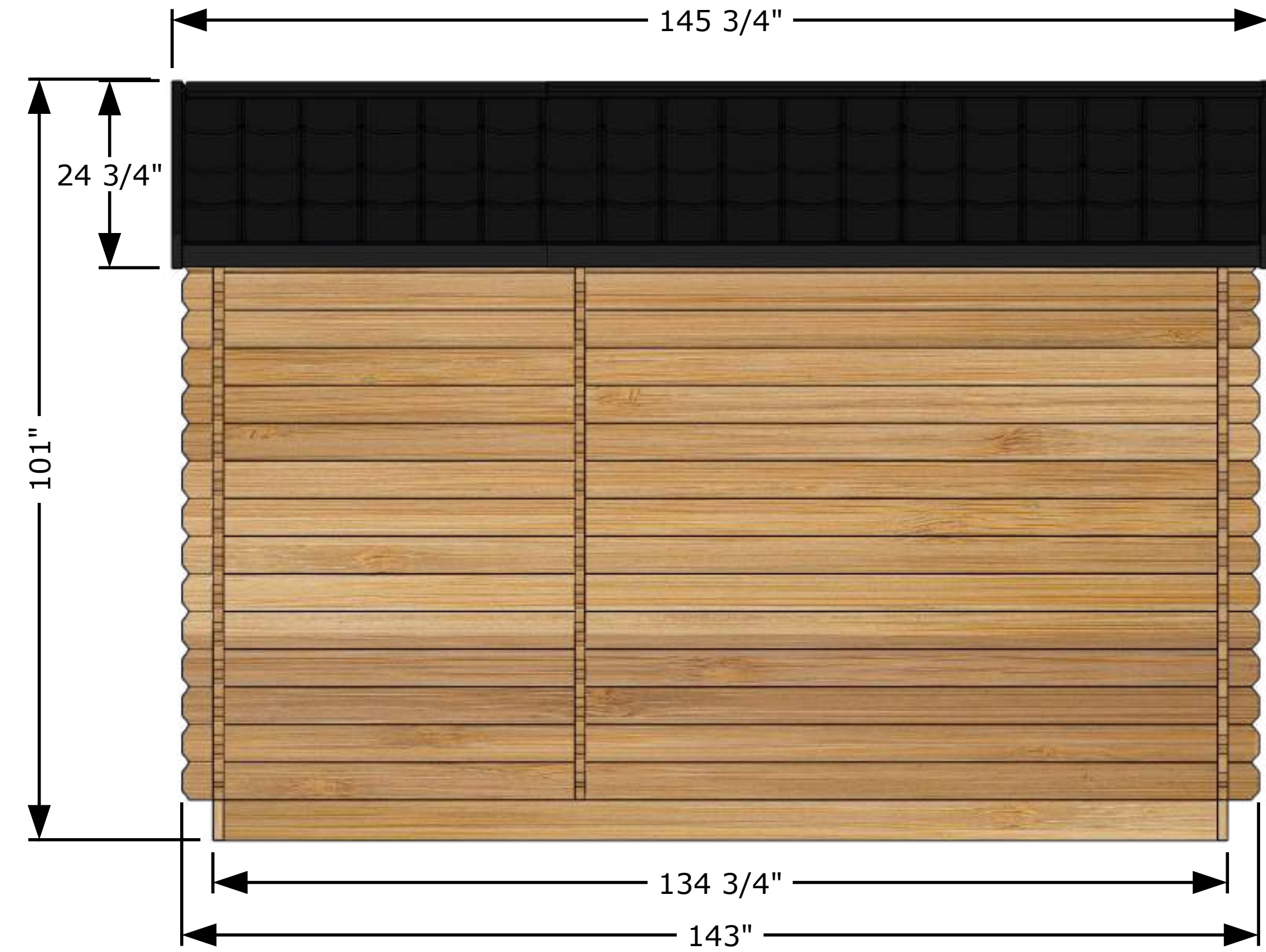
Back View



Top View



Side View



GEORGIAN CTC88CW Sauna Model  
All dimensions in Imperial (Inches)

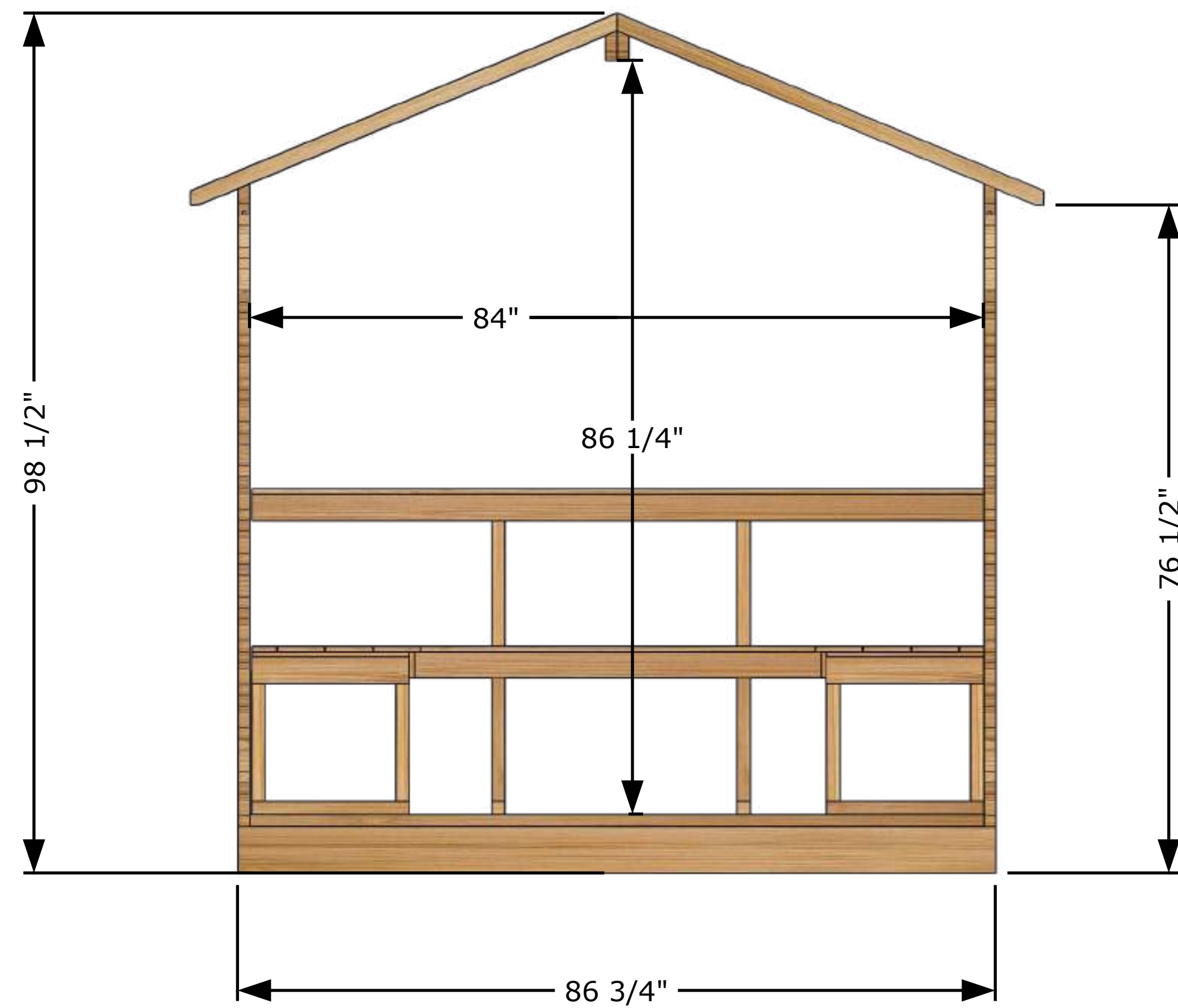
External Structure Dimensions (Drawing 1 of 3)  
Georgian Cabin Sauna with changeroom

April 15, 2025 Tim Marshall

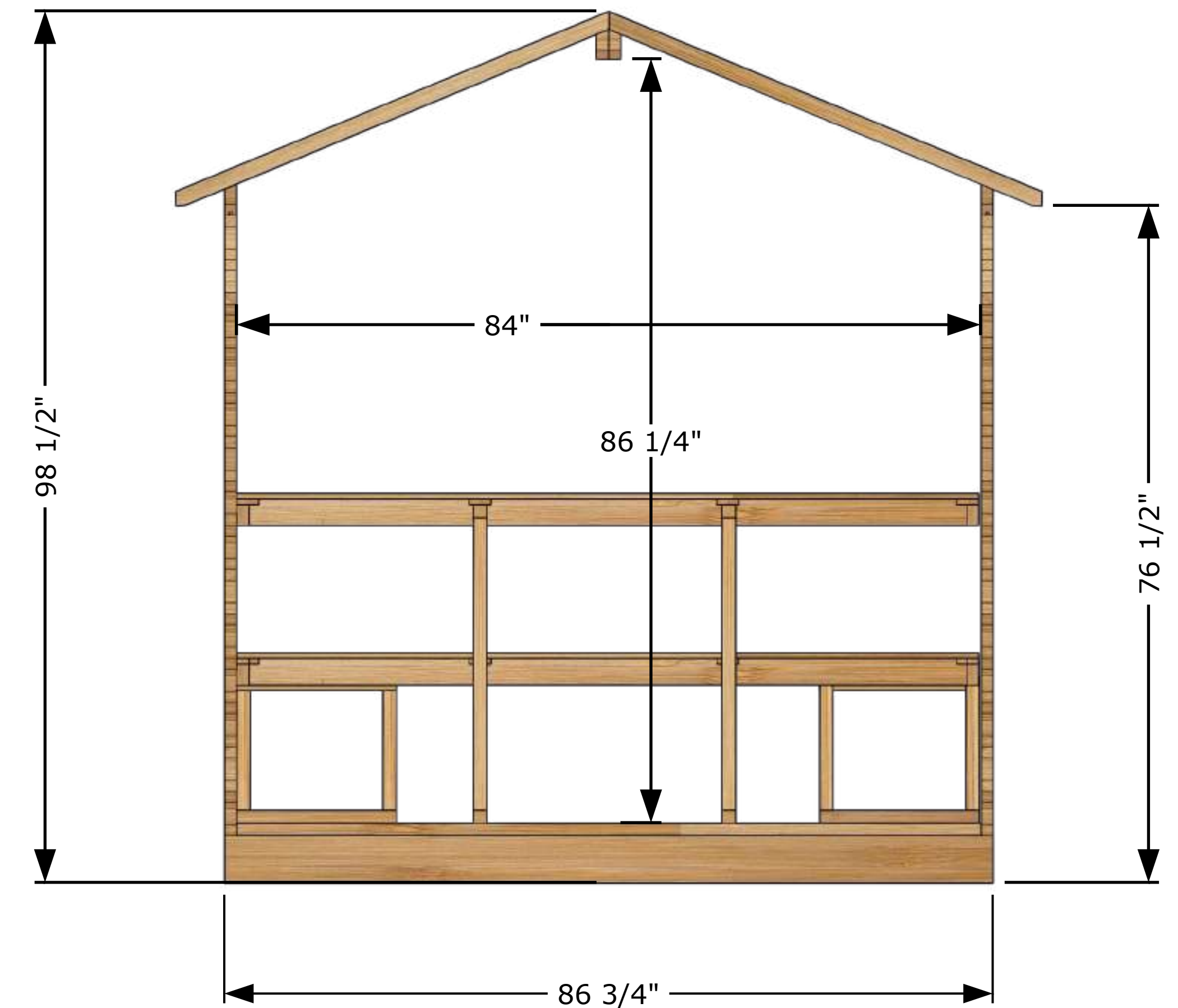


318448 Line NE,  
Melancthon, ON  
L9V 2K3  
(519)923-9813

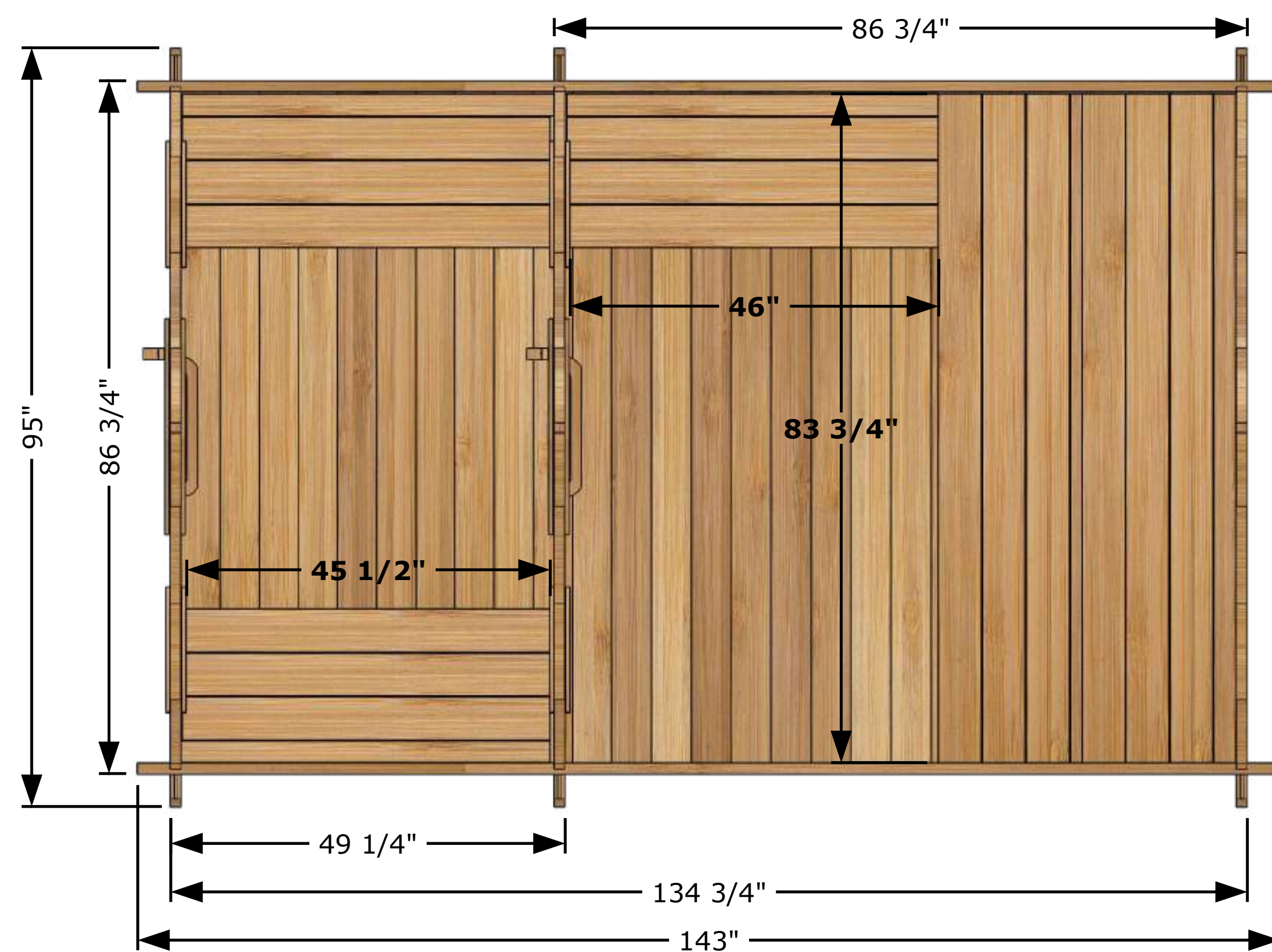
Front View



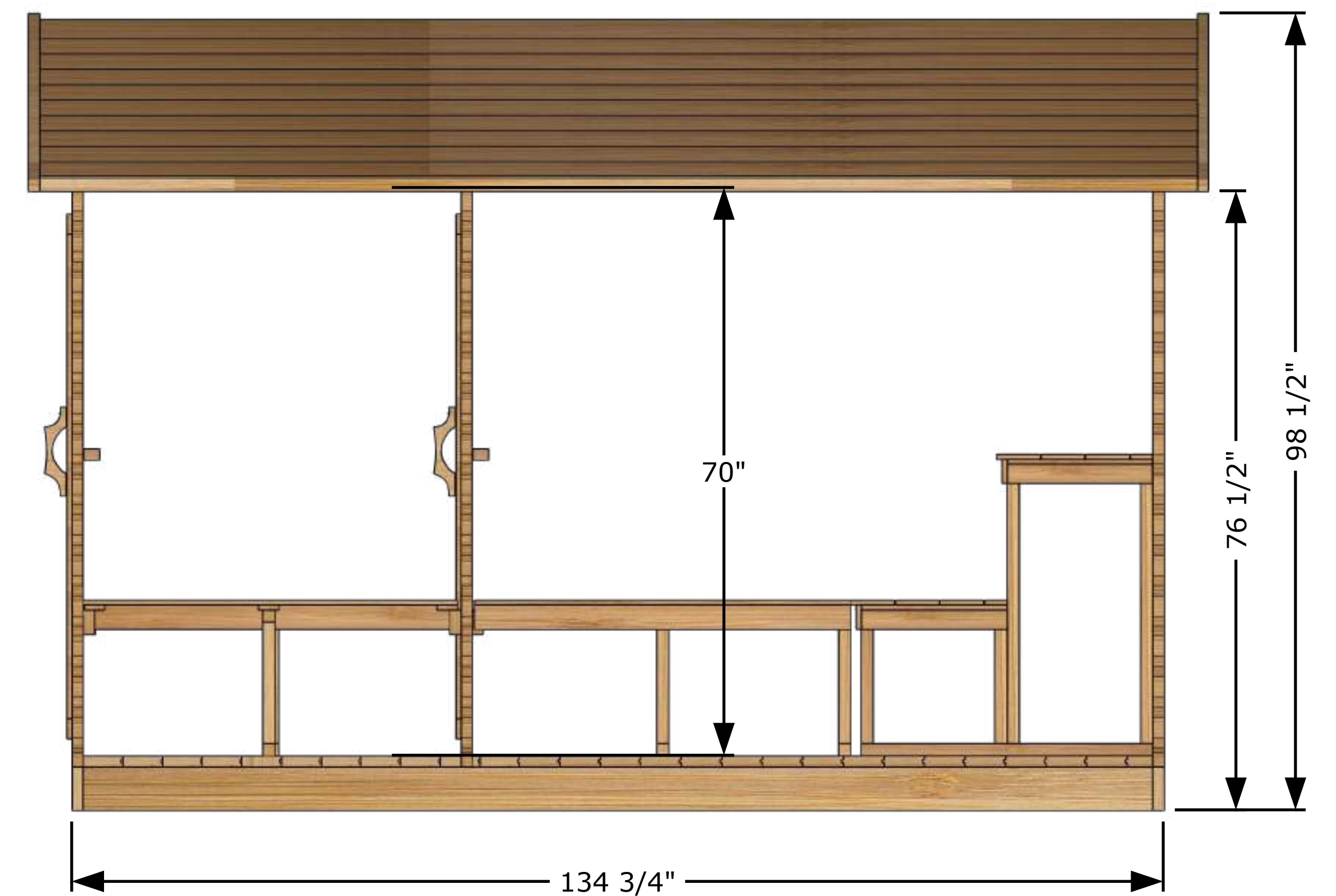
Back View



Top View



Side View



GEORGIAN CTC88CW Sauna Model  
All dimensions in Imperial (Inches)

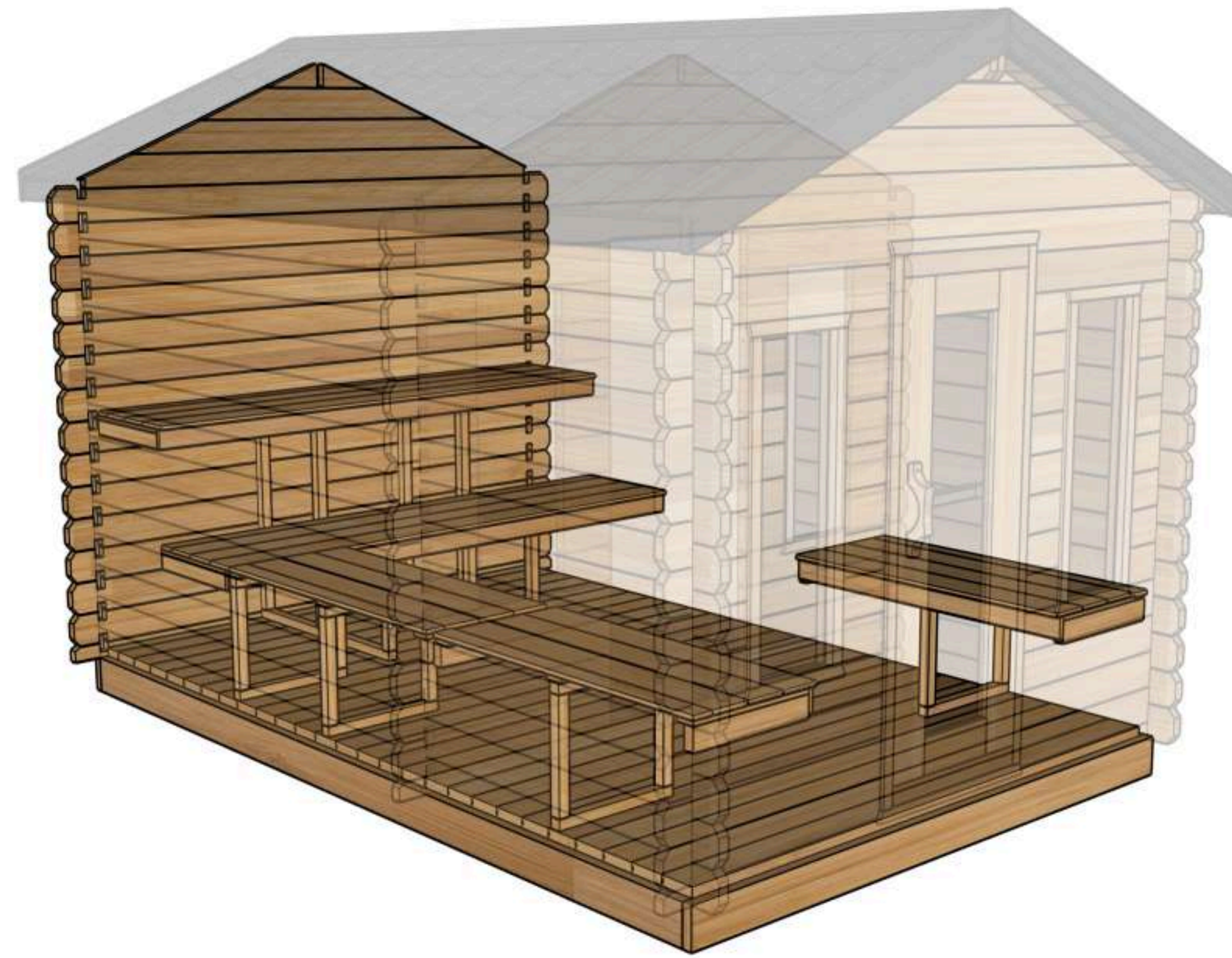
General & Internal Dimensions (Drawing 2 of 3)  
Georgian Cabin Sauna with changeroom

April 21, 2025 Tim Marshall



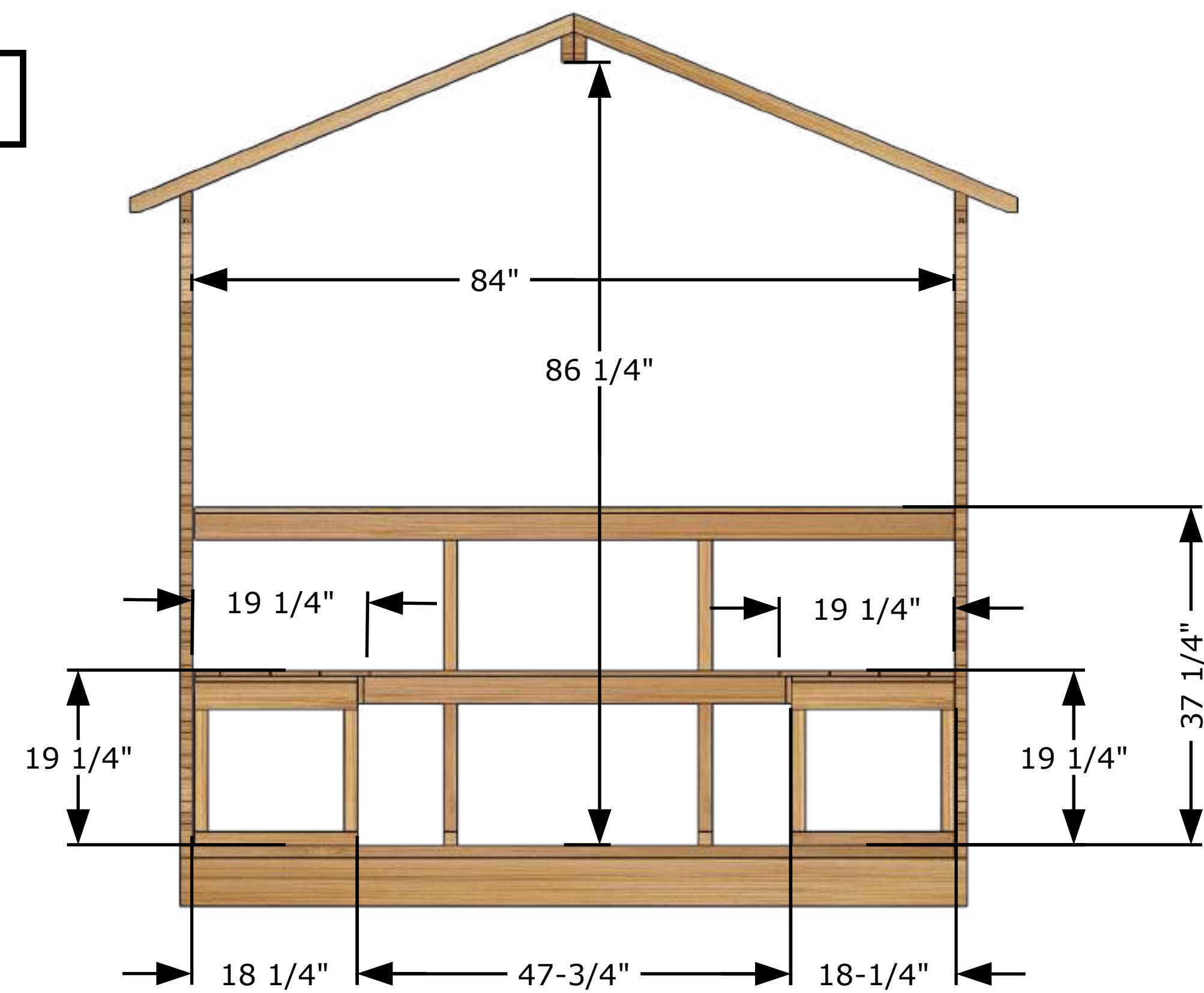
318448 Line NE,  
Melancton, ON  
L9V 2K3  
(519)923-9813

Perspective View

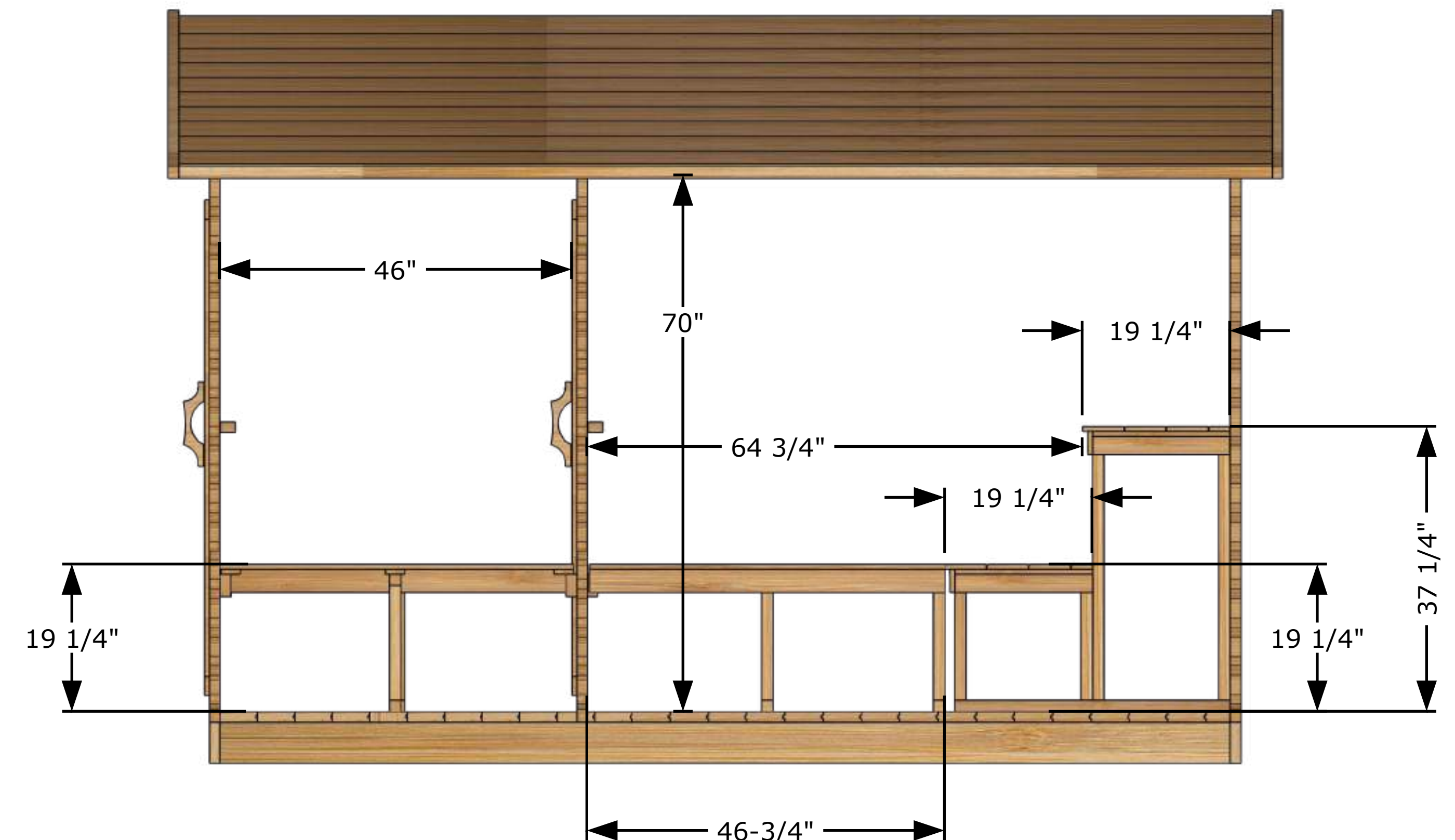


Main Structures and Base Material	Eastern White Cedar
Interior and Ceiling Details	Walls and ceiling T&G Boards Eastern White Cedar wood.
Interior Material	Benches made of Eastern White Cedar wood.
Sauna Door and Windows	Door glass is 5 mm thick bronze tempered glass.
	Window is 5 mm bronze tempered glass.
Door Handle	Door handle made of solid wood, keeping the door closed with a magnet.

Front View



Side View



# Georgian Cabin Sauna with Changeroom Assembly Instructions



## **Requirements:**

- 2 People (recommended)
- Rubber Mallet
- Carpenter's Level
- Tape Measure
- Cordless Drill
- Phillips & Robertson Drill Bits
- 2" (51 mm) hole saw
- Jigsaw
- ¼" (6mm) & ½" (13mm) Nut Driver Bit
- Step Ladder
- Adjustable Wrench
- Grinder & Metal Cutting Disc
- Carpenter's Hammer

**It is highly recommended to view the assembly video prior to starting assembly!**

[Click here to view the assembly process or scan the QR code.](#)



Manufactured by:



# Georgian Cabin with Changeroom Assembly Instructions

**Please read this entire manual before proceeding with the assembly.**

**Congratulations on the purchase of your Canadian Timber Georgian Cabin Sauna with Changeroom.**

**All electrical connections must be performed by a qualified licenced electrician!**

For further information on your heater and installation instructions, please refer to the provided heater manual.

Always ensure that you have the correct screw length so that there will be enough thread to hold, and especially, so that the screw does not go all the way through the material and come out the other side.

When fastening screws into cedar where there are no predrilled holes, it is recommended to pre-drill a hole before inserting the screw to prevent the cedar from splitting or cracking.

**Thank you for choosing Leisurecraft!**

# Georgian Cabin with Changeroom Assembly Instructions

## Index

Base Preparation

Cabin Assembly

Roof Installation

Bench Installation

Electric Heater Installation (Option)

Wood Heater Installation (Option)

Care & Maintenance

Warranty

Manufactured by:



tel: 888-923-9813 | info@leisurecraft.com | web: www.leisurecraft.com

# Georgian Cabin with Changeroom Assembly Instructions

## Sauna Base Preparation

Ensure the base for your sauna is level with a slight slope to the back for drainage.  
A solid base for your sauna is recommended and can be made from the following.



**Concrete Pad**



**Wood Deck**



**Crushed Stone**



**Patio Stone/Paver Blocks**

It is recommended to build a base larger than required to provide a sitting area for cooling off during your sauna session.

Manufactured by:



tel: 888-923-9813 | info@leisurecraft.com | web: www.leisurecraft.com

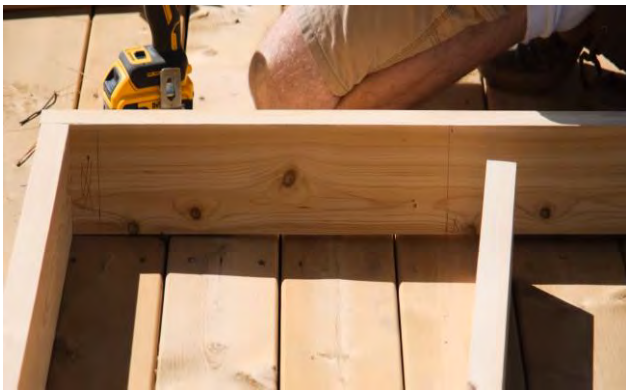
# Georgian Cabin with Changeroom

## Assembly Instructions

### Cabin Assembly



Start the assembly of your Georgian Cabin by laying out the front and back starter staves and the 8 – floor joists.



The starter staves will be “marked” with lines and x’s where each of the floor joists will be placed.

2 floor joists on each end and 4 centered across the base on the lines.



Ensure the joists are on the “marks” and insert 3 – 3” (76mm) screws into the end of each floor joist..



Secure the 2 outer floor joists on each side together with 5 – 3” (76mm) screws spaced out securing from the inside of the inner joist.

Manufactured by:



# Georgian Cabin with Changeroom

## Assembly Instructions

### Cabin Assembly



Measure the distance from opposite corners to ensure the base is square, adjust if needed.



Once the base is square, secure a floorboard across the middle and secure with 1 screw on each side to prevent the base from shifting out of square.



To start the assembly of the floor, locate the stave that is labelled "Floor Starter"  
This will be the floorboard without the groove on one side.



Ensure the "floor Starter" stave is flush with the inside of the front and side base plates.

Manufactured by:



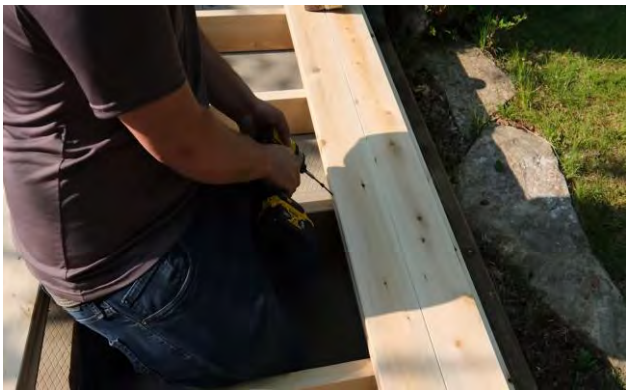
# Georgian Cabin with Changeroom

## Assembly Instructions

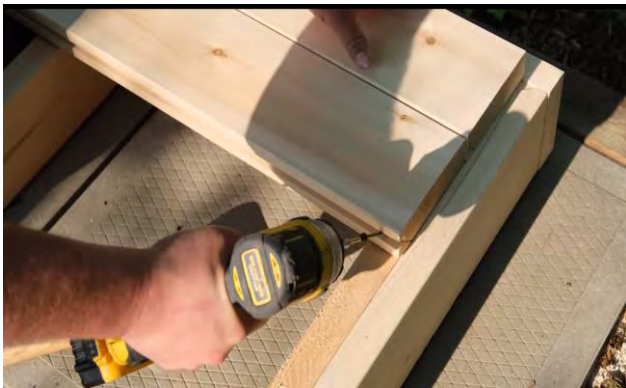
### Cabin Assembly



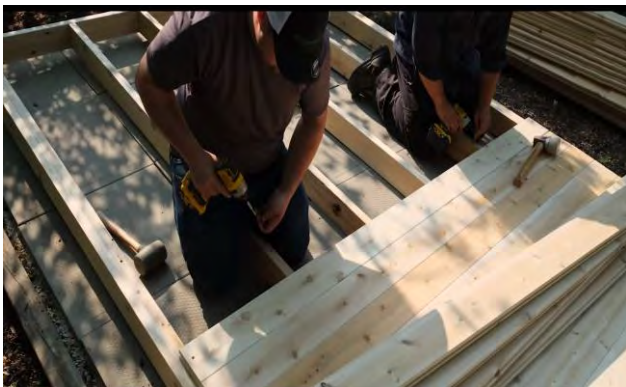
Secure with 12 - 3" (76mm) screws. 6 from the inside of the floorboard and 6 from the outside.



Align the next floorboard up to the edge of the first one and ensure it is tight to the first floorboard by tapping with a rubber mallet, so the tongue sits tightly into the groove.



Once it is tight to the first board, secure it using a 3" (76mm) screw into each floor joist from the side with the groove.



Continue adding the floorboards until you reach the back of the sauna. When you get to the temporary floorboard, remove it and use where needed.

Manufactured by:



tel: 888-923-9813 | info@leisurecraft.com | web: www.leisurecraft.com

# Georgian Cabin with Changeroom

## Assembly Instructions

### Cabin Assembly



When you reach the back of the sauna, use the smaller floorboard and secure it with 6 -3" (76mm) screws.



Locate the wall stave labelled "Door".



Place the door stave onto the front of the sauna. Ensure to place it with the notch cut out for the door facing upwards. (tongue up, groove down)



Place one of the side wall staves and using the provided "hit block" tap it so the groove goes tight over the tongue of the front starter stave. Ensure the tongue is facing up on the side wall stave.

Manufactured by:



# Georgian Cabin with Changeroom

## Assembly Instructions

### Cabin Assembly



Place the back wall starter stave. It is the same as the front wall starter stave without the door section cut out.



Tap the side wall stave using the provided "hit block" so the groove goes tight over the tongue of the back wall starter stave. Repeat with a side wall stave on the opposite side.



Insert a 5" (127mm) screw into each of the notches in the 4 corners to secure the side wall stave to the front and back starter staves.



Insert 3 - 3" (76mm) screws through the front and back starter staves into the floor. If the walls are not sitting tight on the base, you can use a 5" (127mm) screw to pull them down tight to the base. Repeat on the side wall staves using 4 screws per side.

Manufactured by:



# Georgian Cabin with Changeroom

## Assembly Instructions

### Cabin Assembly



Place the starter stave marked “changeroom door” centered between the notches on the side wall staves. Use 4 – 3” (76mm) screws to secure it to the floor.



Locate the short stave with the extra piece attached and place on top of either side of the changeroom wall stave.



Tap the stave tight using the provided “hit block” and use a 5” (127mm) screw into the notch to secure it to the side wall stave. Repeat on opposite side.



Place a short front wall stave on either side of the front wall and secure with a 5” (127mm) screw in each of the notches. Ensure to screw on a bit of an angle to not hit the screws below. Repeat on opposite side.

Manufactured by:



# Georgian Cabin with Changeroom

## Assembly Instructions

### Cabin Assembly



Now place a full-length stave at the rear of the sauna and tap the tongue and groove together to make sure it is tight and secure with a 5" (127mm) screw into the notch at either end. Ensure to screw on a bit of an angle to not hit the screws below.



Repeat the process for a side wall stave. Repeat on opposite side.



Continue adding the wall staves in the same method until you reach the 4<sup>th</sup> row on the front and middle walls of the sauna. Alternating by placing front and middle short wall staves, full back wall stave and then the full-length side wall staves on either side.



Install the short wall stave labelled "window" above the 4<sup>th</sup> row on either side of the front and middle wall and secure in the same manner as previous steps.

These staves will have a notch cut out for the window.

Add another back wall stave and then a side wall stave on either side.

Manufactured by:



# Georgian Cabin with Changeroom

## Assembly Instructions

### Cabin Assembly



Place a short front wall stave on either side of the front and middle walls and secure with a 5" (127mm) screw in each of the notches.



Repeat the process of placing and securing the sides, back wall staves and short front and middle wall staves until the short staves are 8 staves high.



Place your windows onto the front wall and ensure the staves are fully inserted into the grooves. Repeat for middle changeroom wall.



Slide the door in between the front wall staves. Ensure it opens towards the front of the sauna. Repeat for middle changeroom wall.

Manufactured by:



# Georgian Cabin with Changeroom

## Assembly Instructions

### Cabin Assembly



Slide all the small front wall staves without the notch in between the door and windows and ensure they are tight to each other by tapping with a mallet. Repeat for middle changerroom wall.



Place a medium length front wall stave above each window and secure using a 5" (127mm) screw into each notch.



Insert a rear wall stave and a side stave on either side of the sauna and secure using 5" (127mm) screws into the notches on each end of the staves.



Secure the full-length wall stave labelled "Door" above the windows and door and secure with 5" (127mm) screws into the notches in the same manner as the previous steps. Repeat for middle changerroom wall.

Manufactured by:



# Georgian Cabin with Changeroom

## Assembly Instructions

### Cabin Assembly



Place the side wall stave with the tapered edge on the side wall and secure in the notches with a 5" (127mm) screw on both sides of the sauna. The longer edge of the taper on the side wall stave goes to the inside of the sauna.



Place one of the pre-assembled gable ends onto the rear wall of the sauna. Use a rubber mallet to tap the piece tight to the wall. Secure with 5" (127mm) screws into the pre-drilled holes. Repeat for the front and changeroom walls.



Locate the center top beam.



Place the top beam into the slots on the top of the triangle pieces. Use a rubber mallet to tap the top beam tight into the slots on the gable ends. Secure with 6 - 3" (76mm) screws into the pre-drilled holes. (1 screw on each side of gable ends)

Manufactured by:



# Georgian Cabin with Changeroom Assembly Instructions

## Cabin Assembly



Insert 2 – 3" (64mm) screws into the top of the door frame as shown.

Repeat this for the side opposite the door hinges as well with 3 – 3" (64mm) screws.



Place a 3" (64mm) screw through the middle hole on the 2 hinges and then centered in the frame between the 2 hinges.



Use a 5" (127mm) screw in between the previously placed screws in the top of the door frame to pull in the middle of the Gable end.

Repeat for the changerroom door frame.

# Georgian Cabin with Changeroom

## Assembly Instructions

### Roof Assembly



Find the 2 roof starter pieces. Each piece is 2 boards wide with a notch cut out on either end and in the middle.



Align the notch with the edge of gable ends and secure using 2 – 3" (64mm) screws into each of the gable ends.



Place an additional 8 – 3" (76mm) screws spaced out in the roof starter pieces aligned so that the screws are going into the side wall.



Start placing the roof staves going up the roof and tap into each other, Secure with 3 - 3" (76mm) screws into each gable end.

Manufactured by:



# Georgian Cabin with Changeroom

## Assembly Instructions

### Roof Assembly



When you reach the top of one side, use the wide stave without the groove on the top. Secure the top peak piece with 3 – 3" (76mm) screws into the gable ends and 8 more screws centered along the peak into the roof support beam. Repeat the process on the other side of the roof.



Pre-place 4 – 3" (76mm) screws into the front fascia trim piece ensuring it is flush. Repeat on the opposite side. Repeat for the back side of the sauna.



Place the long metal trim pieces on the sides of the roof and secure with the 12 of the included short black screws. Slide the shorter metal trim piece into the longer piece to get to the back of the sauna. Repeat for opposite side of sauna.



Secure the front metal trim pieces onto the wood trim pieces and secure on the face and underneath with 7 of the included short black screws. Repeat on the front side of the sauna.

Manufactured by:



# Georgian Cabin with Changeroom Assembly Instructions

## Roof Assembly



Start applying the metal shingles by sliding the shingle under the side metal trim piece and flush with the edge of the side trim and then secure using the included roofing screws. Screw the shingle to the roof at the bottom of each ridge.



Overlap the panels one ridge and continue securing to the roof to the other side of the sauna.



Continue adding the shingles up the roof overlapping the previous row securing with roofing screws on every ridge until you get to the last row needed.



When you reach the peak, use half width shingles.

Manufactured by:



# Georgian Cabin with Changeroom Assembly Instructions

## Roof Assembly



Use an angle grinder to cut the shingles in half to use as finishers at the end.



Screw the half shingle to the roof at the bottom of each ridge.



Repeat the process for one of the half width shingles. Repeat the above steps for the other side of the roof.



Place the 2 ridge caps on top of each other and mark a line 25" (64cm) from the end of the bottom one.

Manufactured by:



# Georgian Cabin with Changeroom Assembly Instructions

## Roof Assembly



Reveal the adhesive side of the M-seal and apply it to the inside edges of the unmarked ridge cap.



Repeat for the other ridge cap placing the adhesive seal to both sides on just the last 25" of the marked ridge cap.



Place the roof ridge cap under the rear trim piece. Secure with the self-sealing roofing screws every other ridge. Only do 2 rows at this time.



Place the 2nd ridge cap over the first. Ensure to tuck it under the front trim piece and continue securing the ridge caps into every other ridge.

Manufactured by:



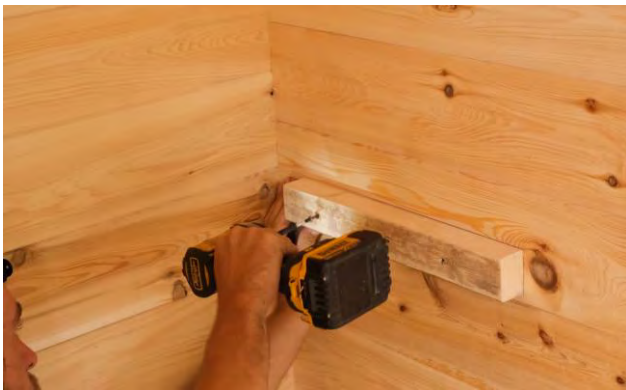
# Georgian Cabin with Changeroom

## Assembly Instructions

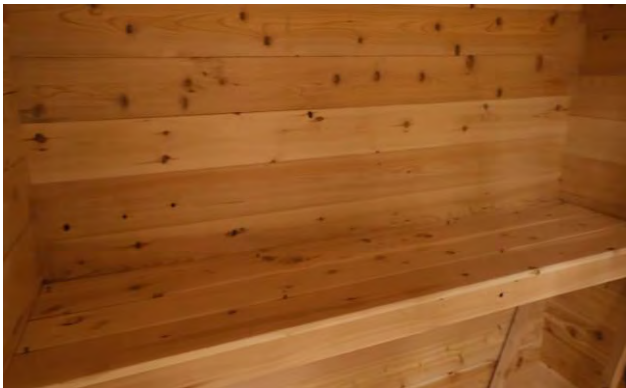
### Bench Assembly



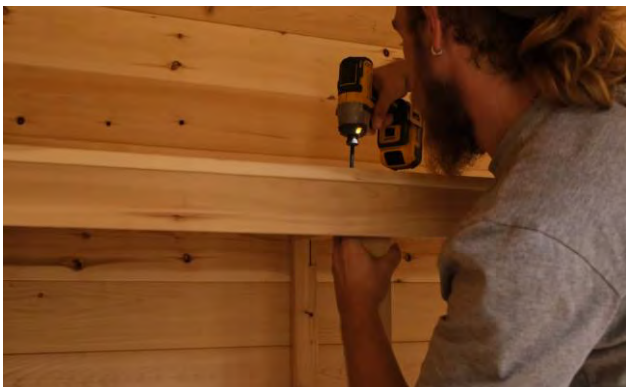
Start the assembly of your benches by placing the 2-tier bench support along the wall. Using a pencil, trace the top and front of the upper and lower bench.



Mount one of the wall mount bench brackets flush to the line on the upper bench and secure with 3 - 2 ½" (64mm) screws. Repeat for the line of the bottom bench and secure with 3 - 2 ½" (64mm) screws. Repeat process on opposite side of sauna,



Place the top bench onto the supports and secure with 2 ½" (64mm) screws. Place the screws into between the bench slats to make them less visible.



Align the bench supports to the slats on bottom of bench. Ensure bench support is square and secure with 2 ½" (64mm) screws from the bench into the support. Again, place the screws into between the bench slats to make them less visible.

Manufactured by:



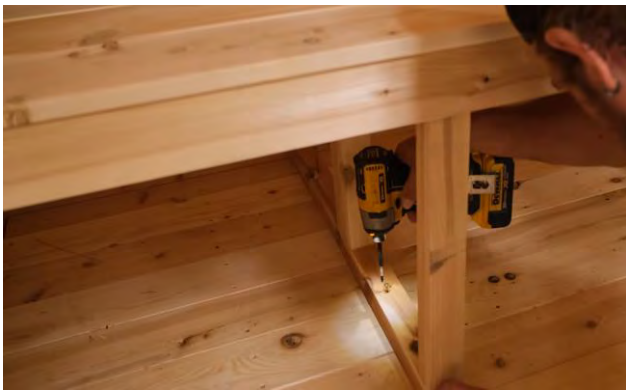
# Georgian Cabin with Changeroom

## Assembly Instructions

### Bench Assembly



Repeat the process for the bottom bench.



Screw the bench supports to the floor and back wall using 2 ½" (64mm) screws.



Place the small bench support against the inside of the middle wall and mark the top and the front as in previous steps.



Mount the support board flush to the line of the bench and secure with 3 - 2 ½" (64mm) screws.

Manufactured by:



# Georgian Cabin with Changeroom

## Assembly Instructions

### Bench Assembly



Place the small bench support on the other end, make sure the side labelled "top" is upward.



Screw the bench support to the floor and side wall using 2 ½" (64mm) screws.



Place the bench on the supports and secure with 2 ½" (64mm) screws. Again, place the screws into between the bench slats to make them less visible.



Line up the support and secure the bench to the supports and the supports to the floor and side wall in the same manner as previous steps using 2 ½" (64mm) screws.

Manufactured by:



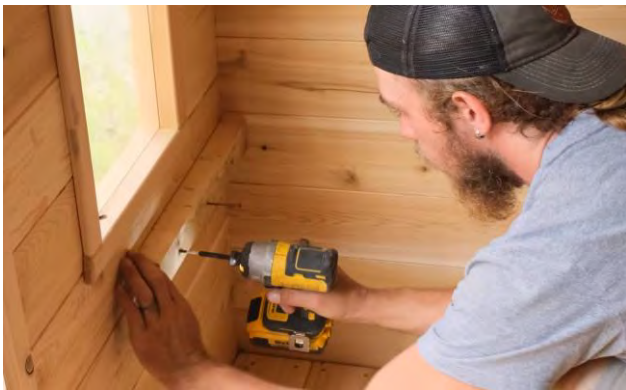
# Georgian Cabin with Changeroom

## Assembly Instructions

### Bench Assembly



To start the assembly of the changerroom benches, Place the small bench support against the inside of the changerroom wall and mark the top and the front as in previous steps. Repeat for the other end.



Mount the support board flush to the line of the bench and secure with 3 - 2 ½" (64mm) screws. Repeat for the other end.



Bring in the changerroom bench and place it on the wall mounts and secure with 2 ½" (64mm) screws. Place the screws into between the bench slats to make them less visible.



Line up the bench support and secure the bench to the supports and the supports to the floor and side wall in the same manner as previous steps using 2 ½" (64mm) screws. Repeat for opposite side changerroom bench.

Manufactured by:



# Georgian Cabin with Changeroom

## Assembly Instructions

### Door Handles & Accessories Installation



Install the outer door handle (small) at the desired height using 2 - 2 ½" (64mm) screws in the pre-drilled holes. Repeat for changerroom door.



Install the inner door handle (large) horizontally at the desired height. Ensure the handle is level and secure using 2 - 2 ½" (64mm) screws in the pre-drilled holes. Repeat for changerroom door.



Install the optional shelf at the desired location and secure with 2 - 1 ½" (38mm) screws.



Install the optional Thermometer using a 1 ½" (38mm) screws.

Manufactured by:



# Georgian Cabin with Changeroom

## Assembly Instructions

### Electric Heater Installation (Optional)



Measure the width of the stove mounting holes.



Measure the height of the mounting holes and add 6".  
(152mm)



Transfer the measurements to the back wall of sauna.

Ensure the heater will be centered between the benches.



Install the two  $\frac{1}{4}$ " x  $1\frac{1}{2}$ " (6mm x 38mm) hex head lag screws (supplied with the heater) into the holes.

Manufactured by:



# Georgian Cabin with Changeroom

## Assembly Instructions

### Electric Heater Installation (Optional)



Hang the heater on the 2 screws and tighten to secure stove in position.



Locate the pieces for your heater guard.

Stand the 2 Assembled side pieces of the heater guard on edge with pre-drilled holes on the bottom.



Screw heater guard support to either side using (2) – 1 ½" (38mm) screws per side.

Repeat for the bottom heater guard support.



Place 2- 2 ½" (64mm) screws into the pre-drilled holes on either side of heater guard to prepare for mounting.

Manufactured by:



# Georgian Cabin with Changeroom

## Assembly Instructions

### Electric Heater Installation (Optional)



Center the guard around the heater and secure to wall with the preplaced screws.



Ensure the guard is level and secure the other side.



Wash the layer of rock dust off of the sauna rocks before using them.

When your sauna is set up and working you should “break-in” the sauna before using it for the first time by turning on the heater to its highest setting and operate it for about 1 hour.

This is recommended to burn off any oils impurities from manufacturing, and it also “cures” the woodwork.

- ***All wiring should be installed according to the heater manufacturers instructions and by a licensed electrician.***

- **Do NOT use a G.F.I breaker**

# Georgian Cabin with Changeroom

## Assembly Instructions

### Wood Stove Installation (Optional)



Remove all protective film from stainless steel parts and the plastic wrap from stove pipe pieces before installation.



Fasten the stove handle onto the stove door With the screws provided.



Remove the screw on the back of stove and remove the back flap.



Place the heat shield on the floor centered between the benches and the changeroom wall.

Manufactured by:



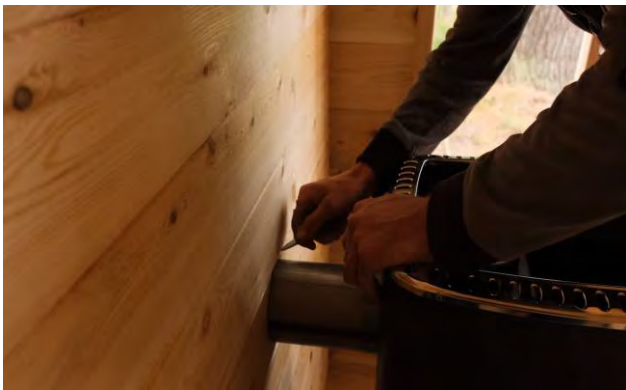
# Georgian Cabin with Changeroom

## Assembly Instructions

### Wood Stove Installation (Optional)



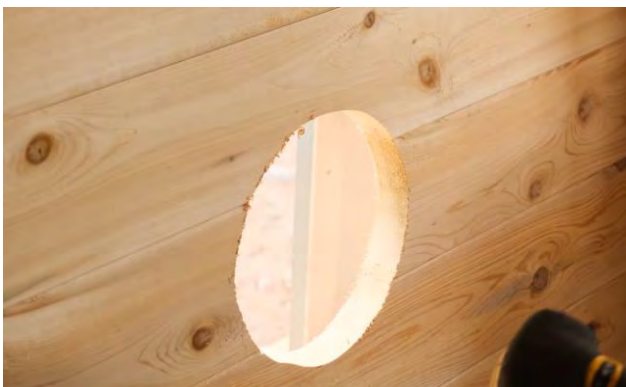
Place the stove onto the heat shield.



Place the short metal pipe into the back of the stove and mark it where it meets the wall.



From the mark, make an 8" (203mm) circle.



Cut out the circle with a jigsaw.

Manufactured by:



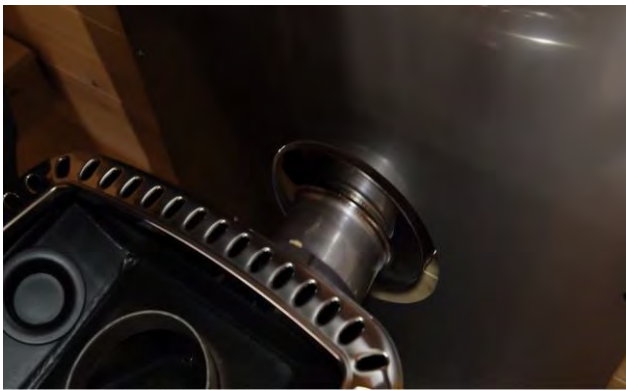
# Georgian Cabin with Changeroom

## Assembly Instructions

### Wood Stove Installation (Optional)



Place the heat shield behind the stove ensuring it is correctly oriented.



Slide the chimney through the hole into the stove to gauge the correct height for the heat shield.



Secure the heat shield to the wall with 6 - 1" (25mm) screws.



Ensure the cap is on the top chimney hole.

Manufactured by:



# Georgian Cabin with Changeroom

## Assembly Instructions

### Wood Stove Installation (Optional)



Slide the 2 chimney stacks together ensuring the welds are aligned.



Place the stack support strap over the groove and secure with the provided bolt, washers and nut.



Slide the chimney cap into the top of the stack.



Slide the chimney assembly into the bottom stack. Ensure the welds are aligned.

Manufactured by:



# Georgian Cabin with Changeroom

## Assembly Instructions

### Wood Stove Installation (Optional)



Place the stack support strap over the groove and secure with the provided bolt, washers and nut.



Disassemble the Chimney stack bracket.



Fasten these 2 brackets together with the provided hardware.



Place a spacer block behind the bracket and using the provided lag screws, secure the bracket to the side of the sauna slightly under the edge of the roof.

Manufactured by:



# Georgian Cabin with Changeroom

## Assembly Instructions

### Wood Stove Installation (Optional)



Push the chimney in until it aligns with the top support bracket and secure it with a support band and the included bolt, nut, and washers.



Install the bottom half of the exterior chimney shield with the provided screws.

Ensure that it is level.



Overlap the top half of the exterior chimney shield and secure with provided screws.



Mark the vent hole positions on the side wall of the sauna, next to the stove, and drill out with a 2" (51mm) hole saw.

Only go halfway through to prevent splintering and drill the remainder from the other side of wall.

Manufactured by:



# Georgian Cabin with Changeroom

## Assembly Instructions

### Wood Stove Installation (Optional)



Using 1 ½" (38mm) screws, screw on the vent cover. (note that the vent guard only goes on the outside.)



Repeat the process high up on the opposite side wall. Drill out with a 2" (51mm) hole saw. Only go halfway through to prevent splintering and drill the remainder from the other side of wall.



Secure the vent cover on the outside of the sauna using 6 - 1 ½" (38mm) screws.



Use a 1 ½" (38mm) screw and attach the vent board on the inside of the sauna making sure it is tight but can still be turned.

Manufactured by:





## **Care & Maintenance**

Regular sauna maintenance is an important aspect of owning a sauna and is essential for preserving the longevity of the sauna and ensuring a pleasant and relaxing experience.

Maintaining your sauna in pristine condition, not only maximizes the performance of the sauna but also safeguards your investment, allowing for enjoyable and healthful sauna sessions for years to come.

### **Interior**

It is recommended to vacuum or sweep out the inside of your sauna frequently to remove dirt and other debris.

After every few uses, a slight wash of the floor and benches with warm soapy water will maintain its cleanliness.

Use a sheet of fine grit sandpaper or a low-pressure wash to remove more stubborn stains or for a deeper cleaning of the interior of your sauna.

After each use, leave the vents and door open to ensure the sauna completely dries between uses.

To help reduce the amount of dirt and sweat in the sauna, users should use towels on benches while using the sauna to help reduce stains that will require additional cleaning.

### **Heater**

Ensure heater is completely cooled before cleaning.

Use a cloth to remove dust from the heater's exterior.

Sauna stones may split or crack due to the exposure of various temperature changes.

Inspect stones for any cracks or breakage and replace as needed to maintain effective heating.

Refer to the manufacturer's heater manual for additional maintenance recommendations.

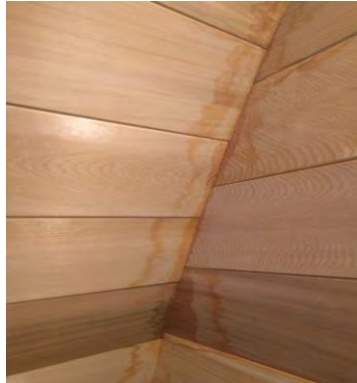
## Exterior

Depending on the humidity and weather conditions in your area, the cedar will either shrink or expand based on the amount of moisture absorption. The desired effect is to have the cedar expand into the bands therefore making the sauna staves much tighter. It is recommended to tighten the bands after the initial installation, usually within the first month and then ongoing as required.

Over time the cedar will weather into a weathered grey colour from natural elements including the sun, rain and snow. This natural weathering will not harm the wood or impair the sauna's performance.

If you wish to retain the natural color of your Leisurecraft Sauna, ensure to use a UV inhibiting sealant.

Some minor water seeping into the sauna is expected and normal for an outdoor sauna. If your sauna is properly installed, you should not have water dripping in, but you should expect some water seepage, especially on the top and sides of the sauna. To minimize water seepage, select a location for your sauna that is under cover, or choose from one of our roofing options.



***Your satisfaction is our priority, and we are committed to ensuring you have the best possible experience with our products. In the event of any ongoing issues, we kindly advise reaching out to the retailer from whom the sauna was purchased or contacting Leisurecraft directly for assistance.***



[support@leisurecraft.com](mailto:support@leisurecraft.com)



888-923-9813



## **5 Year Residential Limited Warranty Policy**

All products designed and manufactured by Dundalk LeisureCraft Inc. ("LeisureCraft") are covered by a limited warranty against defects in materials and workmanship under normal residential use for a period of five (5) years, beginning on the date the product is received by the original end-user consumer.

This warranty does not apply to defects resulting from normal wear and tear, improper installation, insufficient or improper maintenance, natural weather conditions or failure to follow the manufacturer's installation, usage, or care instructions.

In the event of a valid warranty claim, LeisureCraft will provide replacement parts at no charge. However, please note that the replacement of parts will not extend the original warranty period.

This warranty is limited solely to the replacement of parts and does not cover any associated service, labor, or installation costs, all of which are expressly excluded.

**For products offered by LeisureCraft that are not manufactured by LeisureCraft, please refer to the warranty policy and terms provided by the manufacturer.**

## **Limited Warranty**

Dundalk LeisureCraft Inc. ("LeisureCraft") is committed to providing high-quality sauna heaters and accessories to our customers. To offer peace of mind, we will match the manufacturer's warranty on all eligible products purchased from us. If the manufacturer offers a warranty on the product, we will honor that warranty, ensuring the same terms, coverage, and duration.

This warranty is limited to the replacement of parts only. It does not cover any service, labor, or installation costs, which are expressly excluded.

This warranty does not apply to defects caused by normal wear and tear, improper installation, inadequate or improper maintenance, or failure to adhere to the manufacturer's installation, use, or care instructions.

All electrical connections must be made by a licensed electrician. Failure to comply with this requirement will void the warranty.

For warranty claims or inquiries, please contact LeisureCraft customer support at: Phone: 888-923-

9813 Email: [support@leisurecraft.com](mailto:support@leisurecraft.com)



**tel: 888-923-9813 | info@leisurecraft.com | web: www.leisurecraft.com**